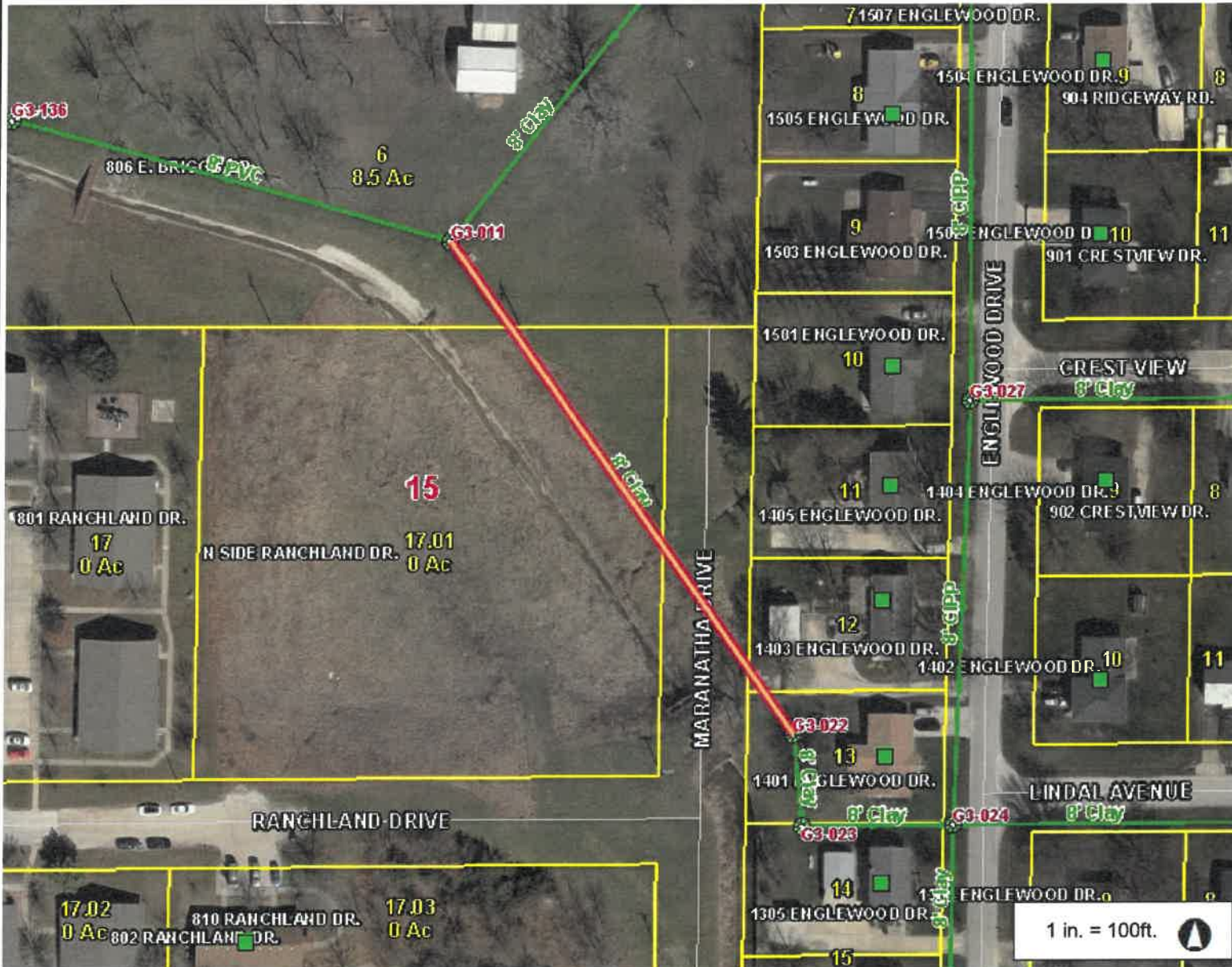


Macon, MO



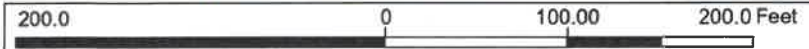
Legend

- Customer Point
- Manhole
- Manhole Label
- Lift Station
- Lamp Hole
- Cleanout
- Lamphole
- Lamp Hole Label
- Grit Chamber
- Pipe Point
- Pipe Point Label
- Gravity Main
- Gravity Main Label
- Pressurized Main Point
- Air Release Valve
- ◆ GPS Location
- Trace Station
- Valve
- ▶ Pressurized Main
- Lagoon
- Road
- County Roads / City Streets
- US Highway
- Lettered State Highway
- +— Railroad
- Address

Notes

This Cadastral Map is for informational purposes only. It does not purport to represent a property boundary survey of the parcels shown and shall not be used for conveyances or the establishment of property boundaries.

THIS MAP IS NOT TO BE USED FOR NAVIGATION



1 in. = 100ft.

Upstream Manhole: G3-011

Rim Elevation: 837.93 Ft

Integrity™ Sewer Analyst

Downstream Manhole: G3-022

Rim Elevation: 835.58 Ft

Sewer Report

Material: Block

Depth: 6.59 Ft

Slope (%): 1.06

Line Length: 409.22 Ft

Line Size: 8"

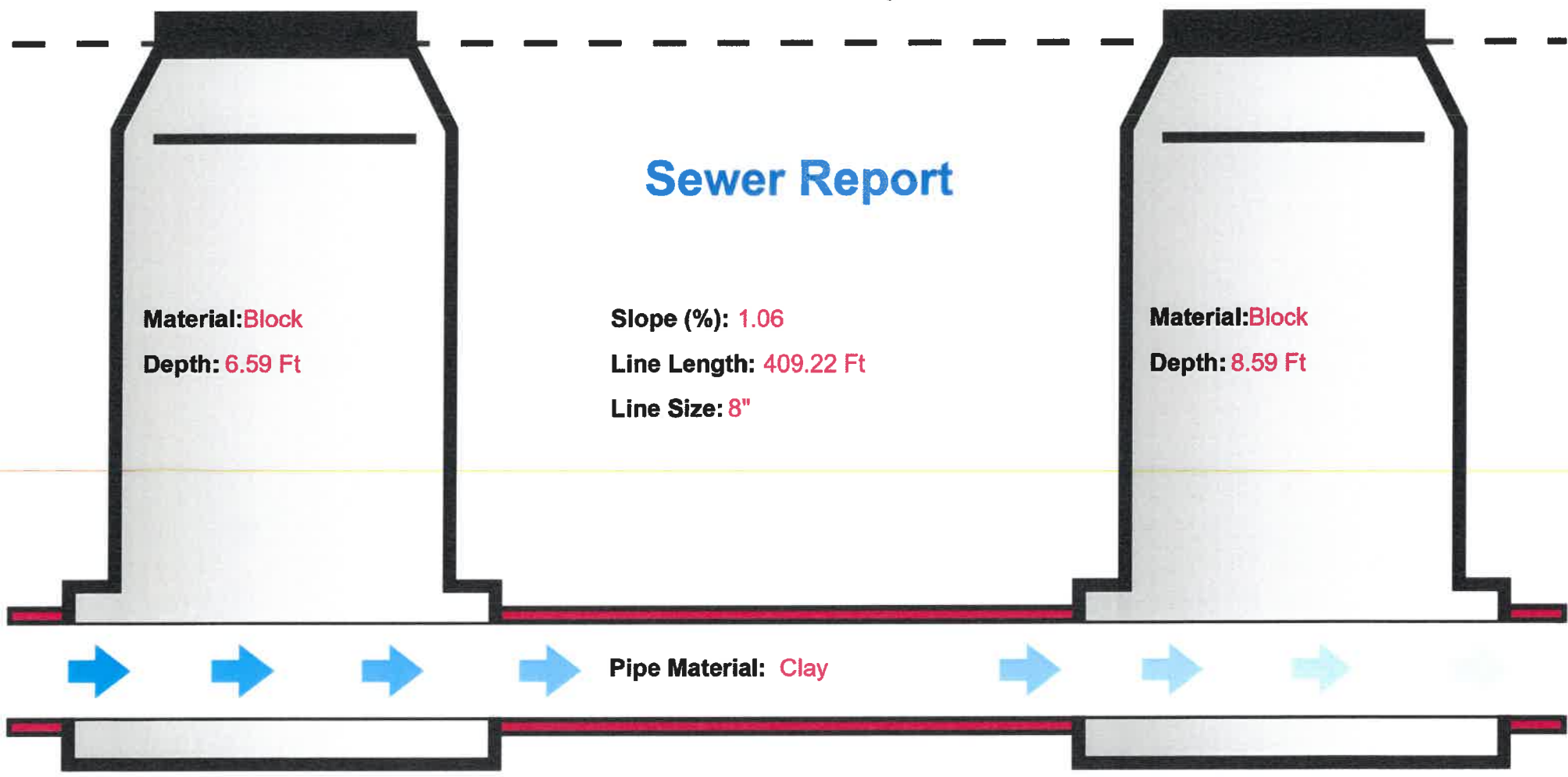
Material: Block

Depth: 8.59 Ft

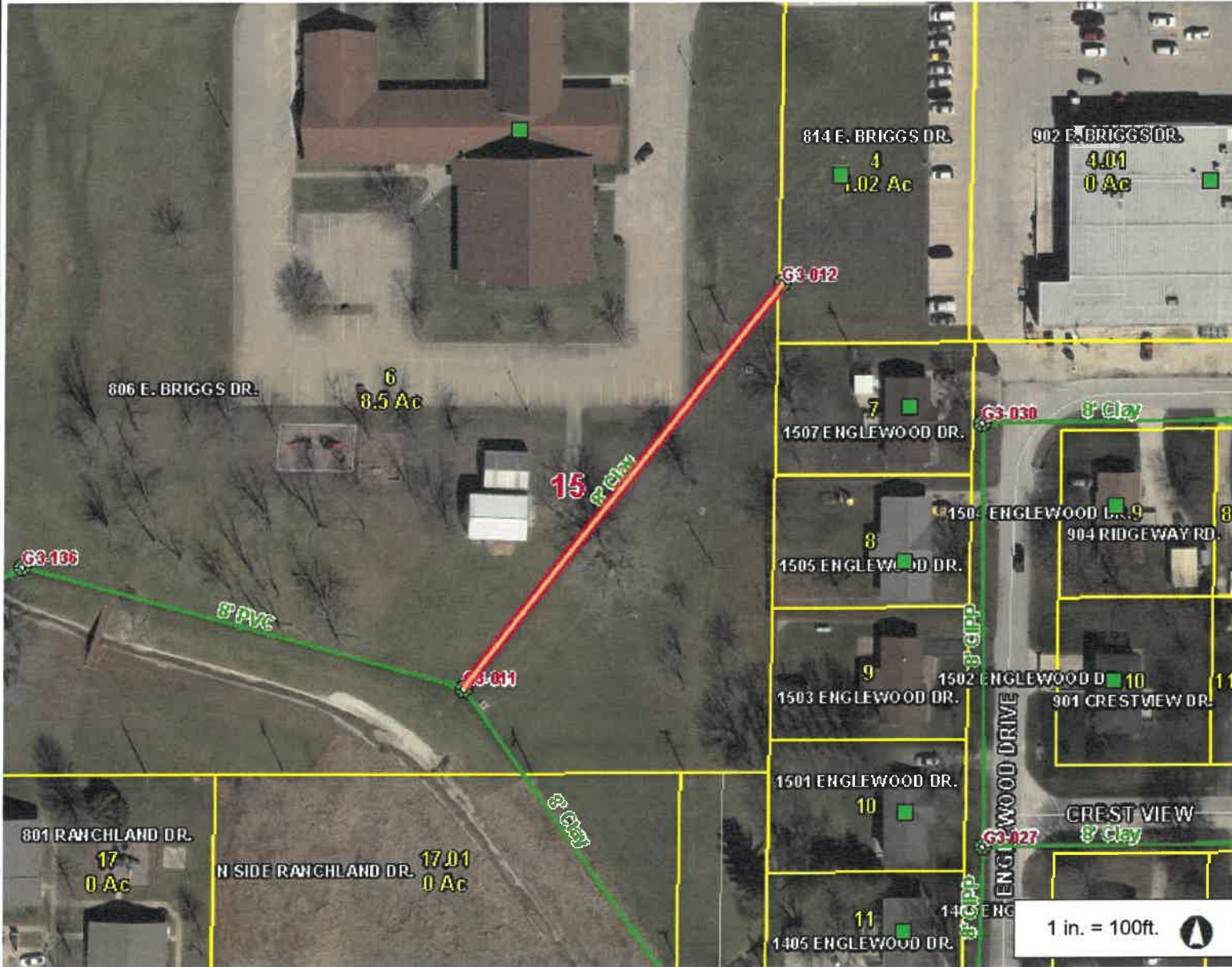
Pipe Material: Clay

Pipe Invert Elevation: 831.34 Ft

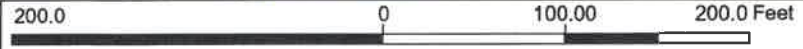
Pipe Invert Elevation: 827.02 Ft



Macon, MO



- ### Legend
- Customer Point
 - Manhole
 - Manhole Label
 - Lift Station
 - Lamp Hole
 - Cleanout
 - Lamphole
 - Lamp Hole Label
 - Grit Chamber
 - Pipe Point
 - Pipe Point Label
 - Gravity Main
 - Gravity Main Label
 - Pressurized Main Point
 - Air Release Valve
 - ◆ GPS Location
 - Trace Station
 - Valve
 - Pressurized Main
 - Lagoon
 - Road
 - County Roads / City Streets
 - US Highway
 - Lettered State Highway
 - + Railroad
 - Address



1 in. = 100ft. ▲

This Cadastral Map is for informational purposes only. It does not purport to represent a property boundary survey of the parcels shown and shall not be used for conveyances or the establishment of property boundaries.

THIS MAP IS NOT TO BE USED FOR NAVIGATION

Notes

Upstream Manhole: G3-012

Rim Elevation: 851.69 Ft

Integrity™ Sewer Analyst

Downstream Manhole: G3-011

Rim Elevation: 837.93 Ft

Sewer Report

Material: **Precast**

Depth: **11.44 Ft**

Slope (%): **2.47**

Line Length: **348.47 Ft**

Line Size: **8"**

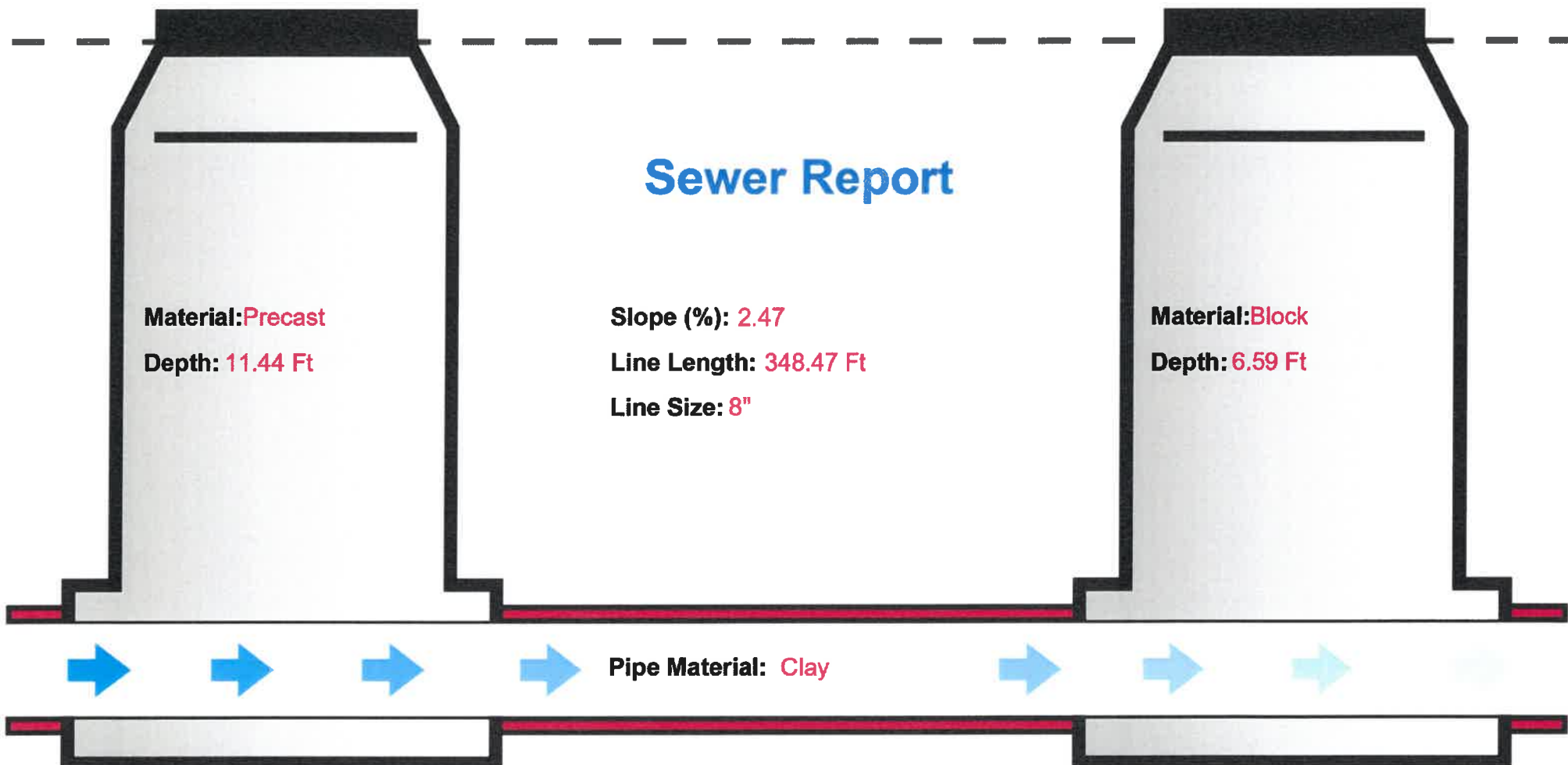
Material: **Block**

Depth: **6.59 Ft**

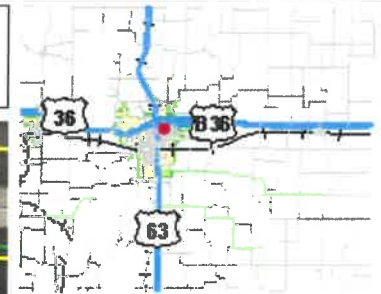
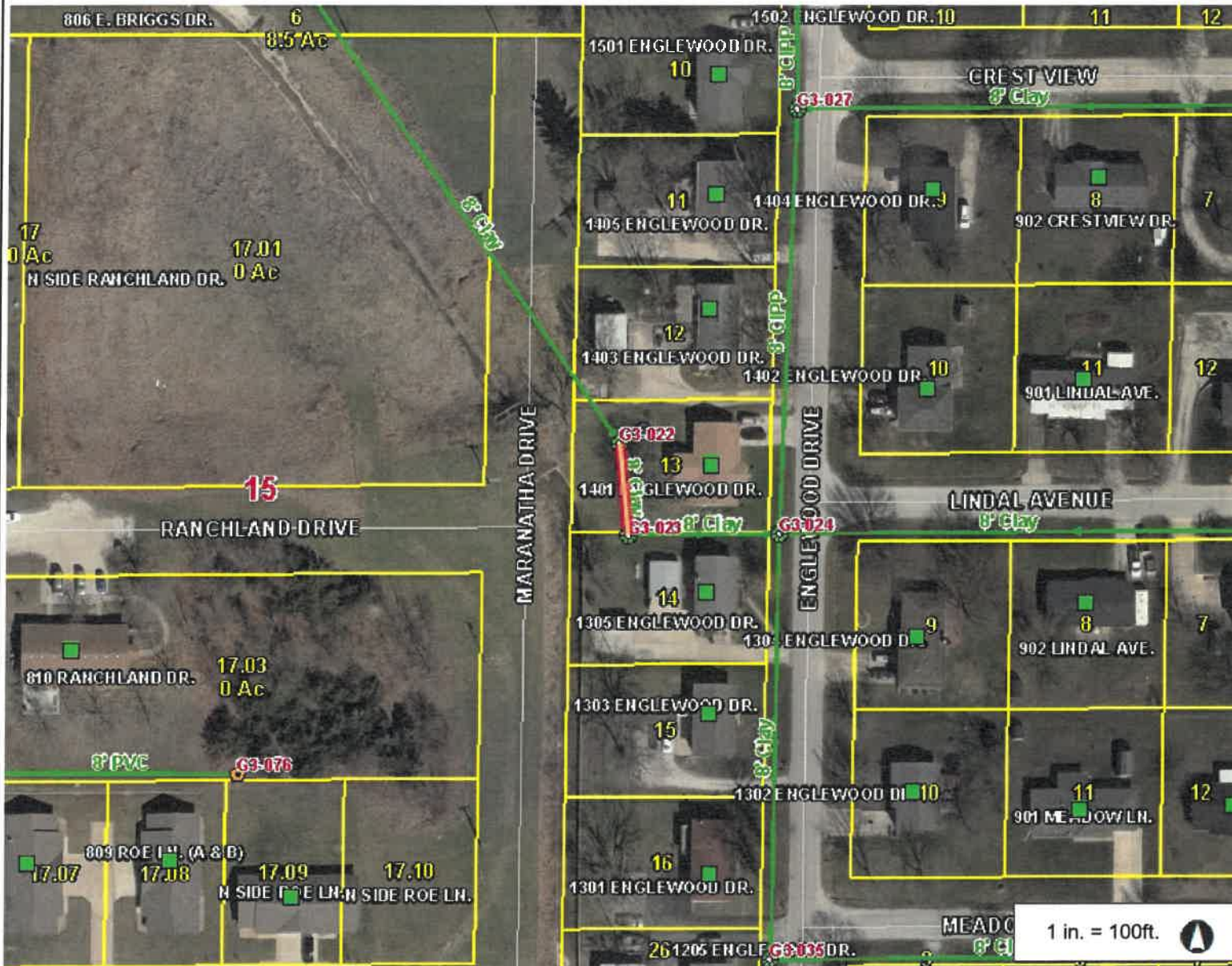
Pipe Material: **Clay**

Pipe Invert Elevation: **840.25 Ft**

Pipe Invert Elevation: **831.64 Ft**



Macon, MO

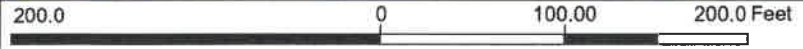


- ### Legend
- Customer Point
 - Manhole
 - Manhole Label
 - Lift Station
 - Lamp Hole
 - Cleanout
 - Lamphole
 - Lamp Hole Label
 - Grit Chamber
 - Pipe Point
 - Pipe Point Label
 - Gravity Main
 - Gravity Main Label
 - Pressurized Main Point
 - Air Release Valve
 - ◆ GPS Location
 - Trace Station
 - Valve
 - Pressurized Main
 - Lagoon
 - Road
 - County Roads / City Streets
 - US Highway
 - Lettered State Highway
 - Railroad
 - Address

Notes

This Cadastral Map is for informational purposes only. It does not purport to represent a property boundary survey of the parcels shown and shall not be used for conveyances or the establishment of property boundaries.

THIS MAP IS NOT TO BE USED FOR NAVIGATION



This Cadastral Map is for informational purposes only. It does not purport to represent a property boundary survey of the parcels shown and shall not be used for conveyances or the establishment of property boundaries.

THIS MAP IS NOT TO BE USED FOR NAVIGATION

Upstream Manhole: G3-022

Rim Elevation: 835.58 Ft

Integrity™ Sewer Analyst

Downstream Manhole: G3-023

Rim Elevation: 834.54 Ft

Sewer Report

Material: Block

Depth: 8.59 Ft

Slope (%): 0.61

Line Length: 62.49 Ft

Line Size: 8"

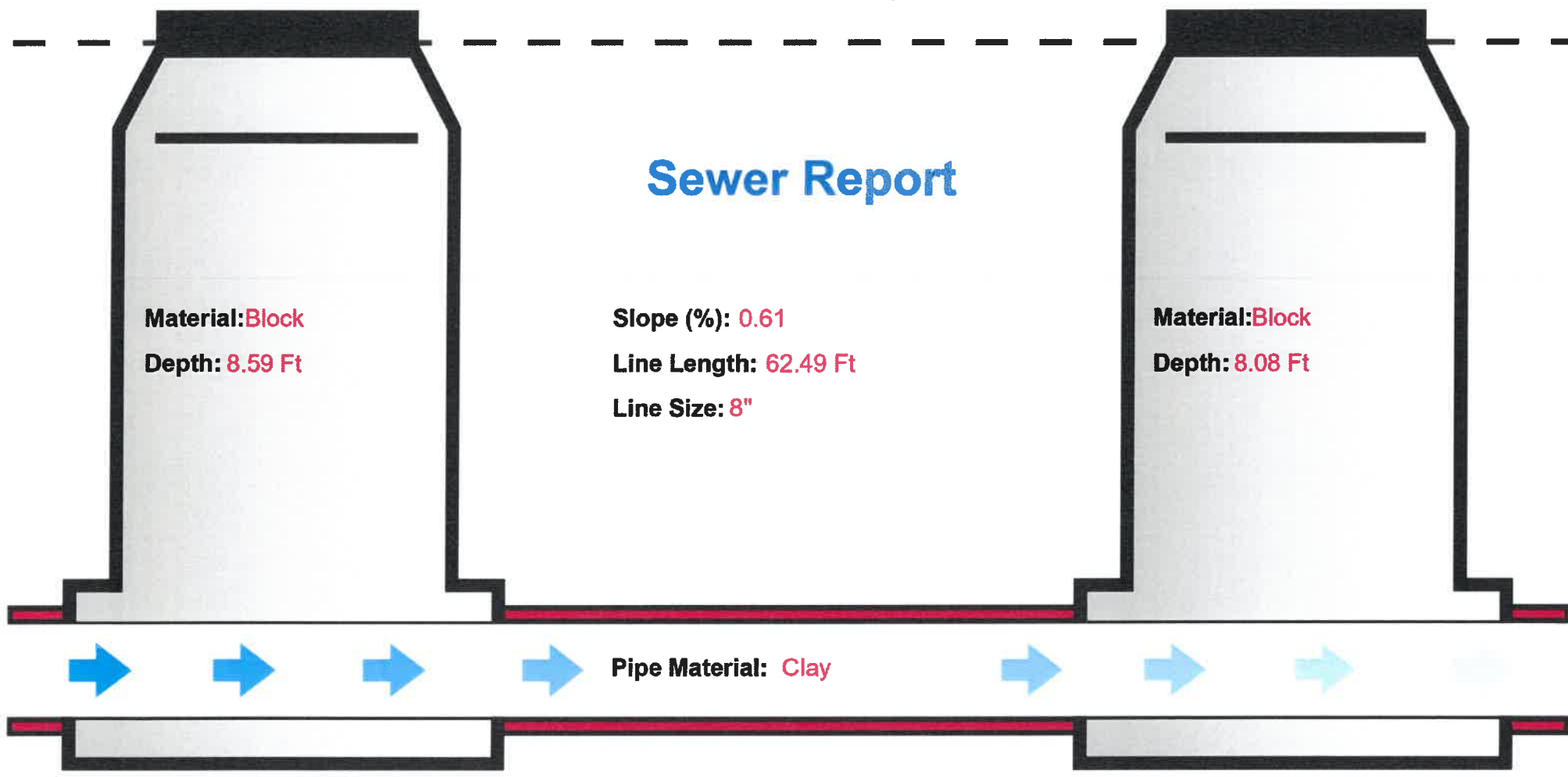
Material: Block

Depth: 8.08 Ft

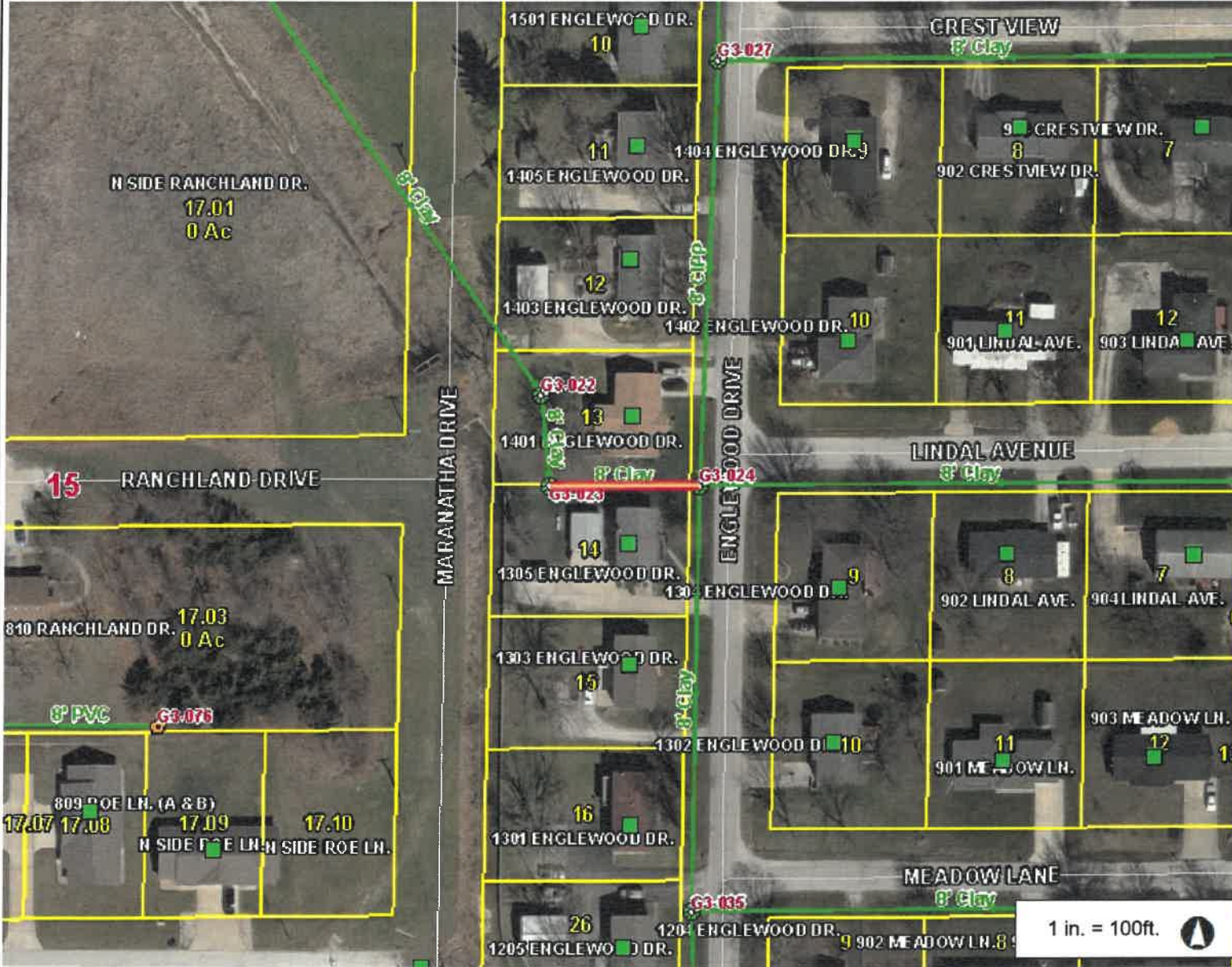
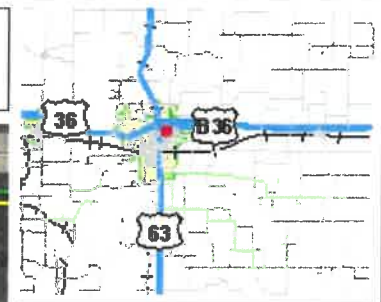
Pipe Material: Clay

Pipe Invert Elevation: 826.99 Ft

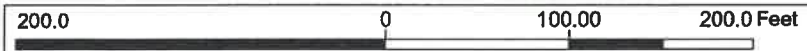
Pipe Invert Elevation: 826.61 Ft



Macon, MO



- ### Legend
- Customer Point
 - Manhole
 - Manhole Label
 - Lift Station
 - Lamp Hole
 - Cleanout
 - Lamphole
 - Lamp Hole Label
 - Grit Chamber
 - Pipe Point
 - Pipe Point Label
 - Gravity Main
 - Gravity Main Label
 - Pressurized Main Point
 - Air Release Valve
 - ◆ GPS Location
 - Trace Station
 - Valve
 - Pressurized Main
 - Lagoon
 - Road
 - County Roads / City Streets
 - US Highway
 - Lettered State Highway
 - Railroad
 - Address



This Cadastral Map is for informational purposes only. It does not purport to represent a property boundary survey of the parcels shown and shall not be used for conveyances or the establishment of property boundaries.

THIS MAP IS NOT TO BE USED FOR NAVIGATION

Notes

1 in. = 100ft.

Upstream Manhole: G3-023

Rim Elevation: 834.54 Ft

Integrity™ Sewer Analyst

Downstream Manhole: G3-024

Rim Elevation: 842.45 Ft

Sewer Report

Material: Block

Depth: 8.08 Ft

Slope (%): 1.26

Line Length: 101.79 Ft

Line Size: 8"

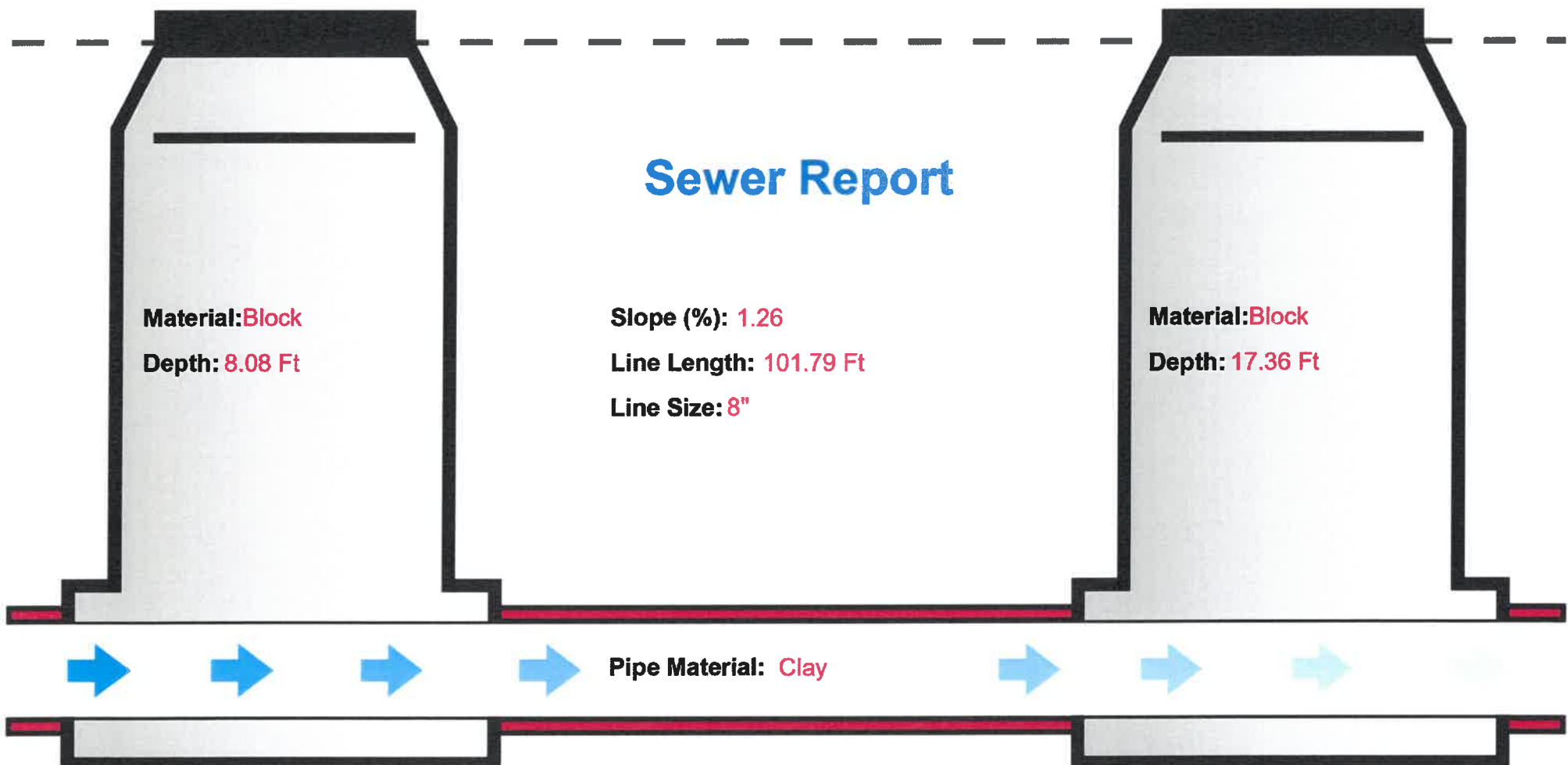
Material: Block

Depth: 17.36 Ft

Pipe Material: Clay

Pipe Invert Elevation: 826.46 Ft

Pipe Invert Elevation: 825.18 Ft



Macon, MO



- ### Legend
- Manhole
 - Manhole Label
 - Lift Station
 - Lamp Hole
 - Cleanout
 - Lamphole
 - Lamp Hole Label
 - Grit Chamber
 - Pipe Point
 - Pipe Point Label
 - Gravity Main
 - Gravity Main Label
 - Pressurized Main Point
 - Air Release Valve
 - ◆ GPS Location
 - Trace Station
 - Valve
 - Pressurized Main
 - Lagoon
 - Road
 - County Roads / City Streets
 - US Highway
 - Lettered State Highway
 - Railroad
 - Address
 - Parcel

Notes

This Cadastral Map is for informational purposes only. It does not purport to represent a property boundary survey of the parcels shown and shall not be used for conveyances or the establishment of property boundaries.

THIS MAP IS NOT TO BE USED FOR NAVIGATION

Upstream Manhole: E3-018

Rim Elevation: 807.75 Ft

Integrity™ Sewer Analyst

Downstream Manhole: E3-017

Rim Elevation: 805.18 Ft

Sewer Report

Material: Block

Depth: 6.69 Ft

Slope (%): 0.65

Line Length: 128.93 Ft

Line Size: 8"

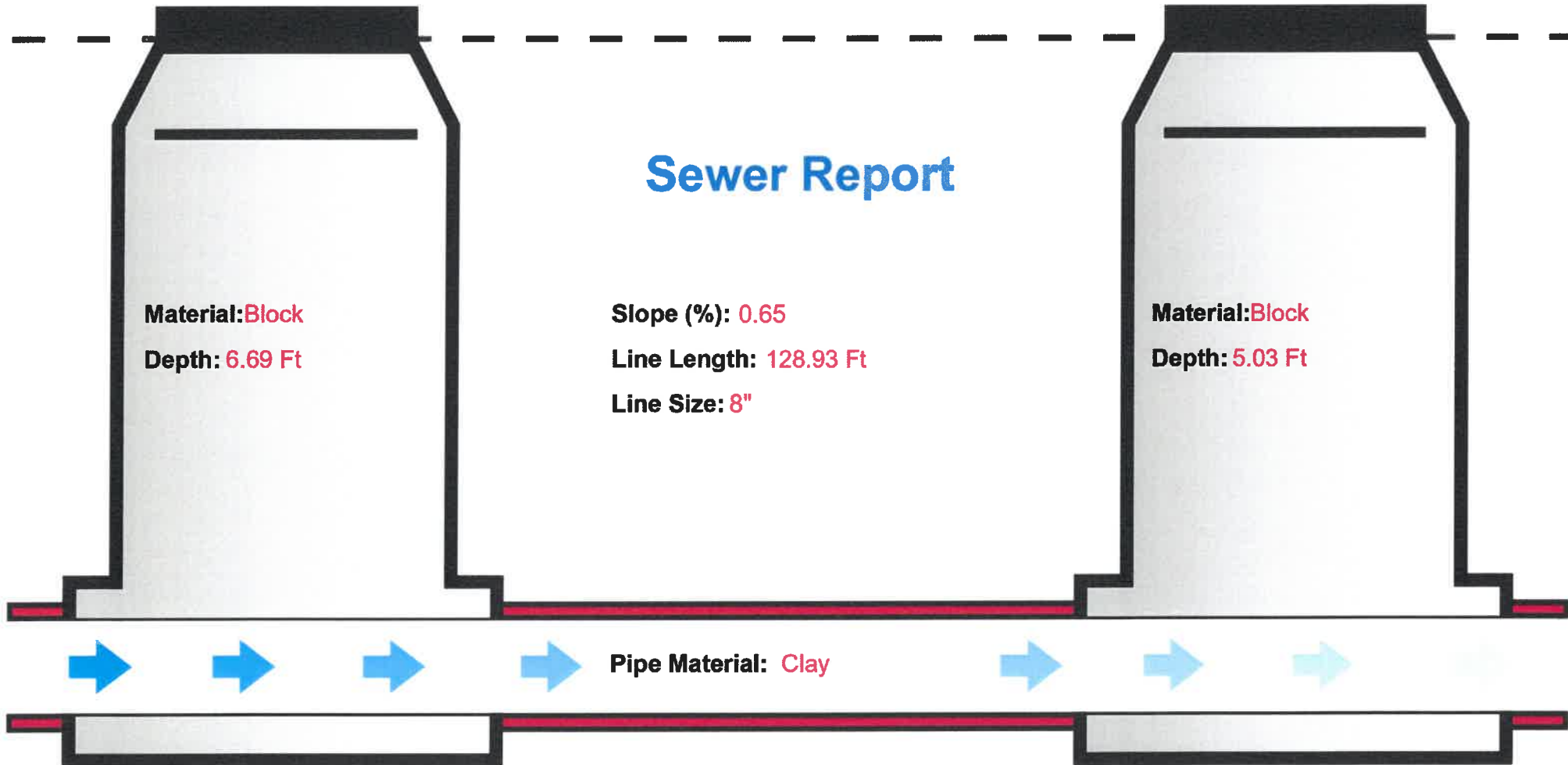
Material: Block

Depth: 5.03 Ft

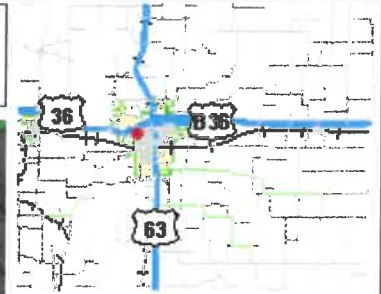
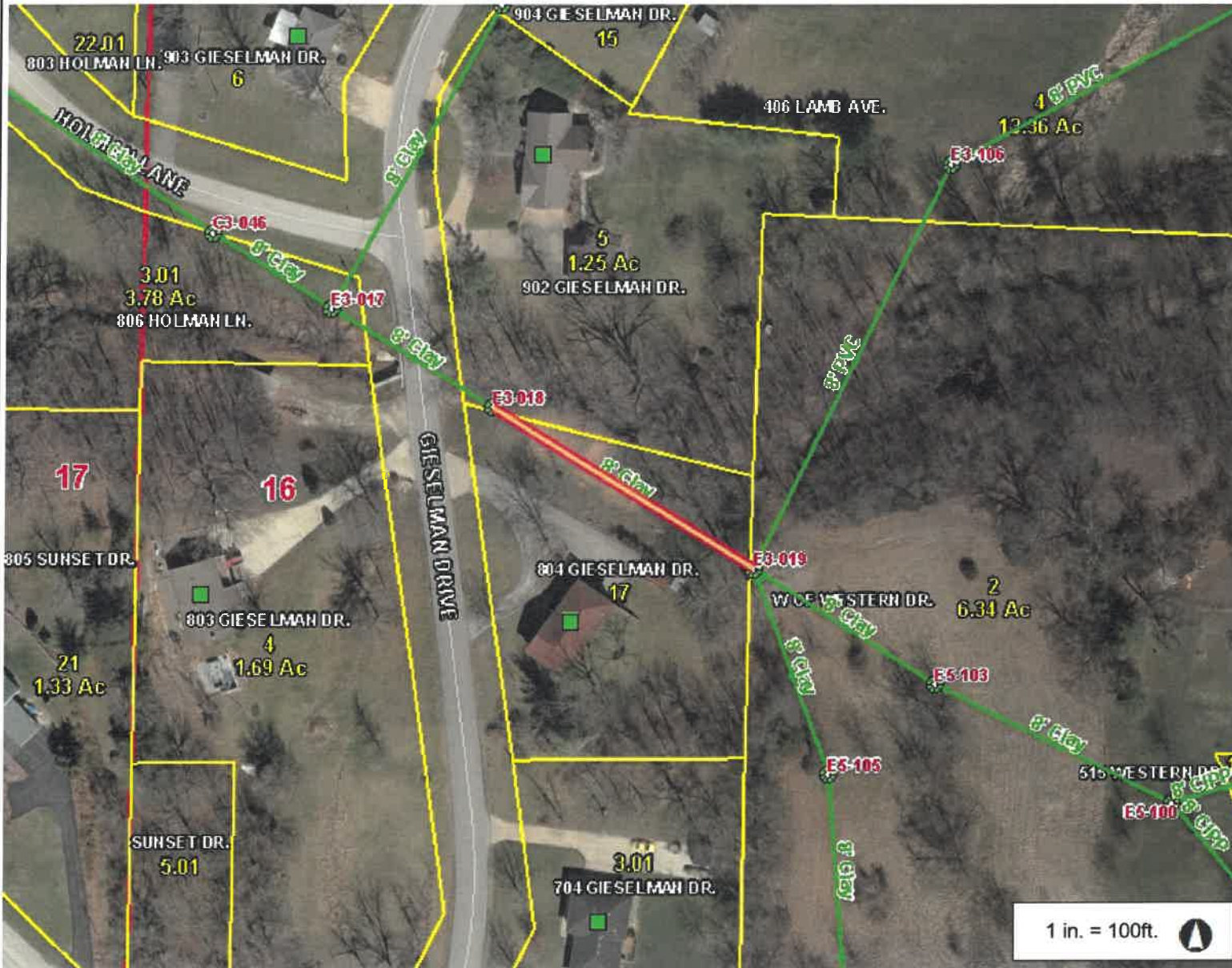
Pipe Material: Clay

Pipe Invert Elevation: 801.06 Ft

Pipe Invert Elevation: 800.21 Ft



Macon, MO



- Legend**
- Customer Point
 - Manhole
 - Manhole Label
 - Lift Station
 - Lamp Hole
 - Cleanout
 - Lamphole
 - Lamp Hole Label
 - Grit Chamber
 - Pipe Point
 - Pipe Point Label
 - Gravity Main
 - Gravity Main Label
 - Pressurized Main Point
 - Air Release Valve
 - ◆ GPS Location
 - Trace Station
 - Valve
 - Pressurized Main
 - Lagoon
 - Road
 - County Roads / City Streets
 - US Highway
 - Lettered State Highway
 - Railroad
 - Address

1 in. = 100ft.



This Cadastral Map is for informational purposes only. It does not purport to represent a property boundary survey of the parcels shown and shall not be used for conveyances or the establishment of property boundaries.

THIS MAP IS NOT TO BE USED FOR NAVIGATION

Notes

Upstream Manhole: E3-019

Rim Elevation: 814.94 Ft

Integrity™ Sewer Analyst

Downstream Manhole: E3-018

Rim Elevation: 807.75 Ft

Sewer Report

Material: **Precast**

Depth: **6.93 Ft**

Slope (%): **3.23**

Line Length: **208.42 Ft**

Line Size: **8"**

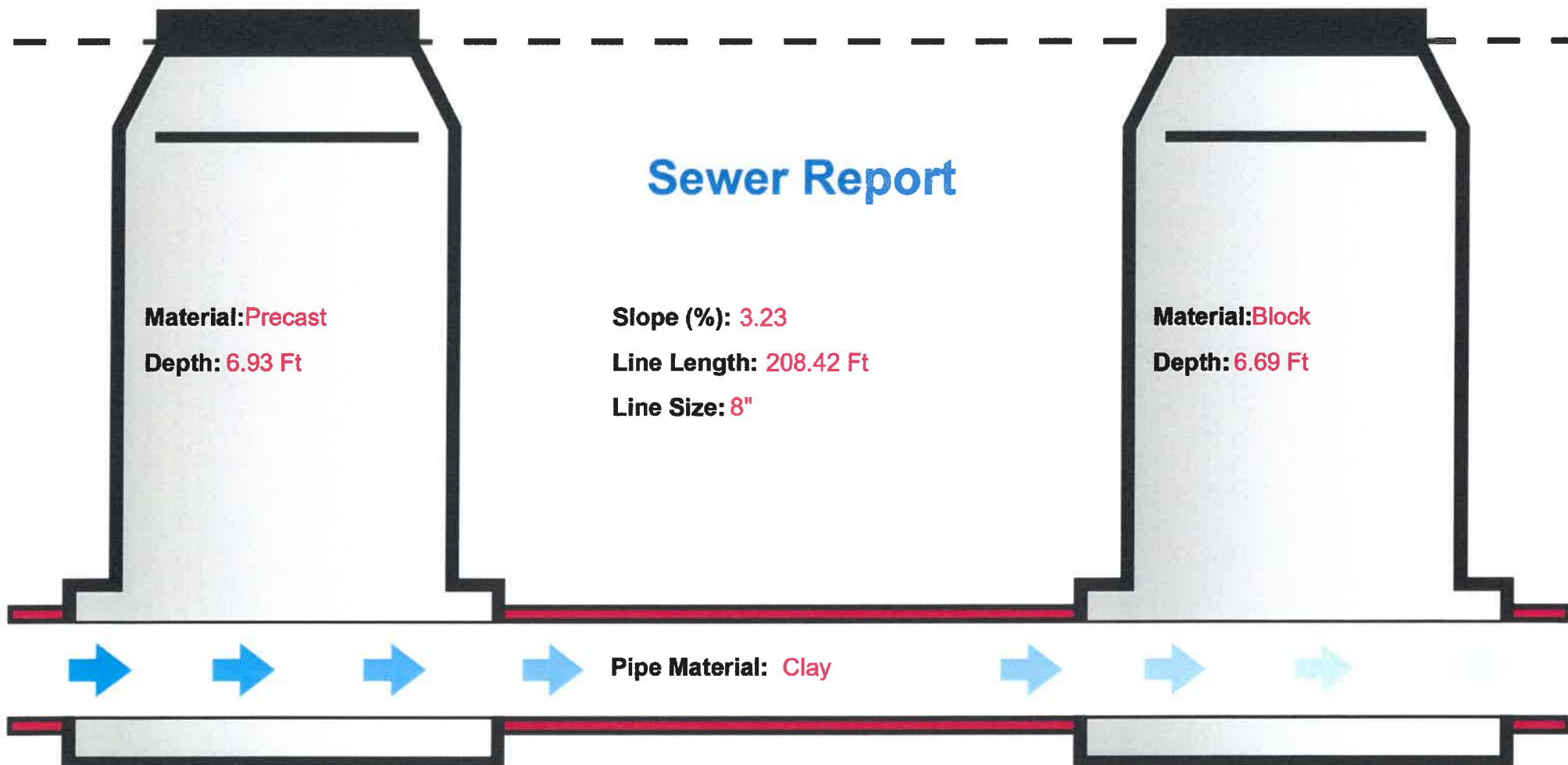
Material: **Block**

Depth: **6.69 Ft**

Pipe Material: **Clay**

Pipe Invert Elevation: **808.01 Ft**

Pipe Invert Elevation: **801.28 Ft**



Upstream Manhole: C3-030

Rim Elevation: 800.29 Ft

Integrity™ Sewer Analyst

Downstream Manhole: C3-029

Rim Elevation: 797.08 Ft

Sewer Report

Material: Block

Depth: 8.34 Ft

Slope (%): 1.28

Line Length: 234.63 Ft

Line Size: 8"

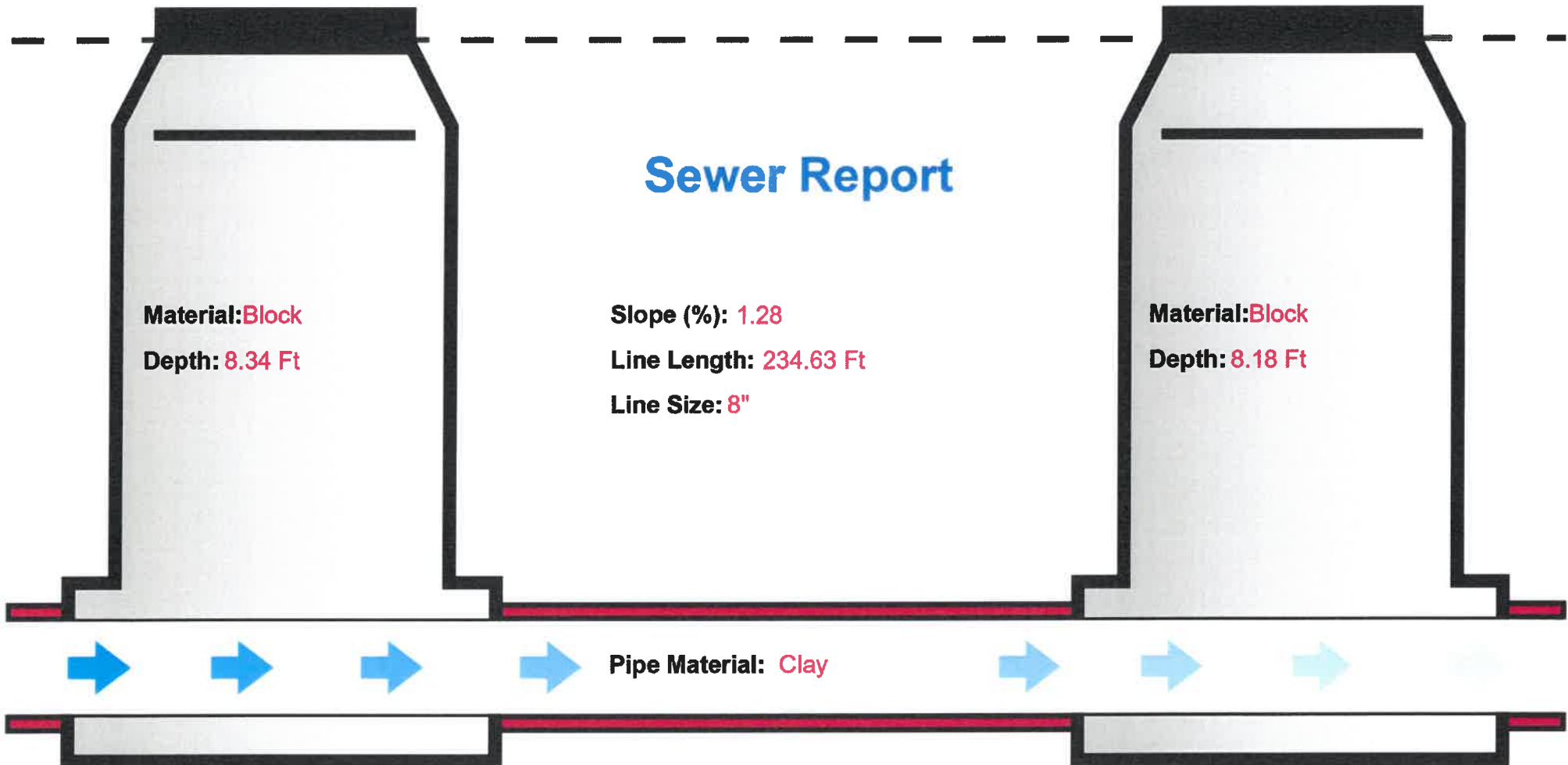
Material: Block

Depth: 8.18 Ft

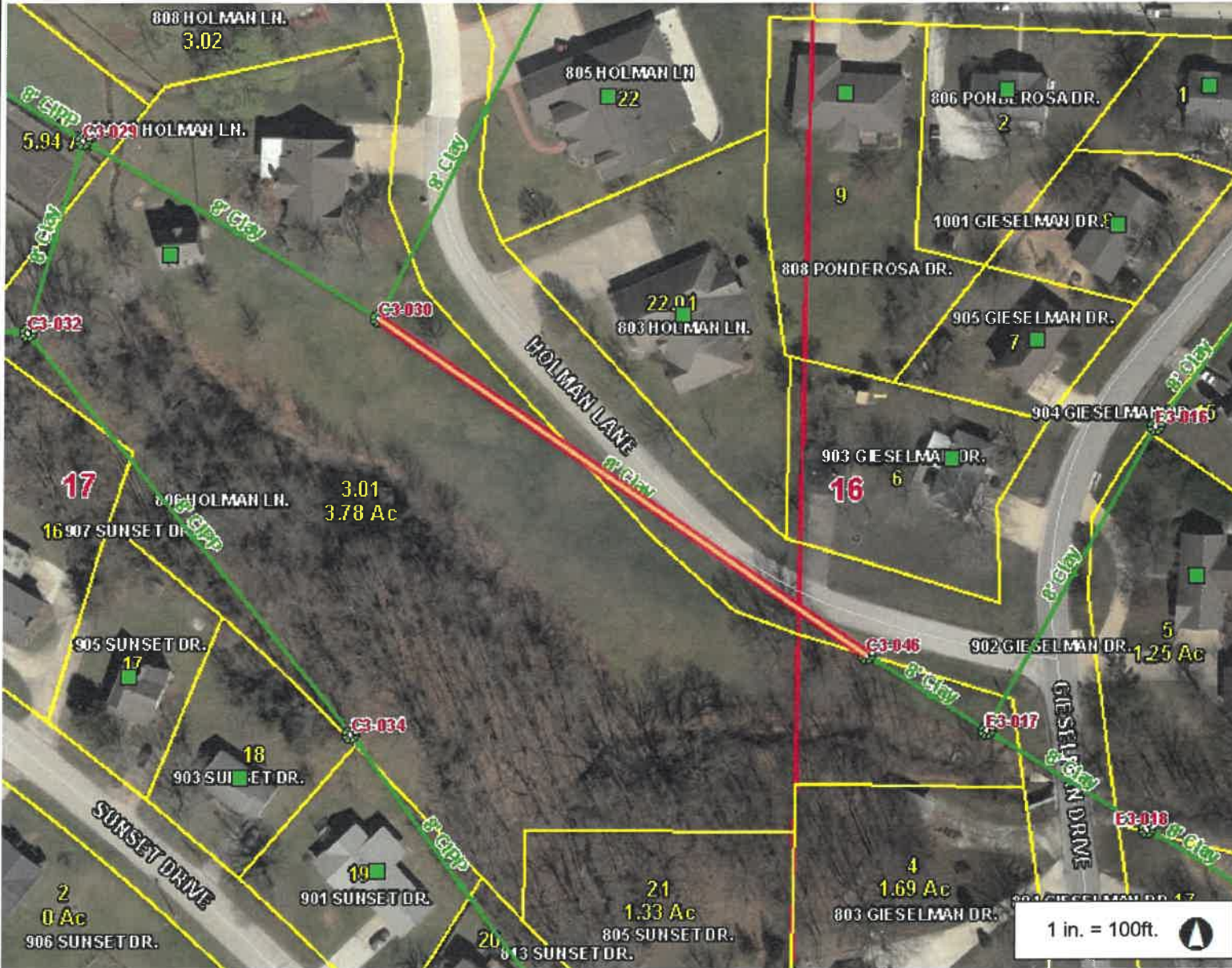
Pipe Material: Clay

Pipe Invert Elevation: 791.95 Ft

Pipe Invert Elevation: 788.93 Ft



Macon, MO

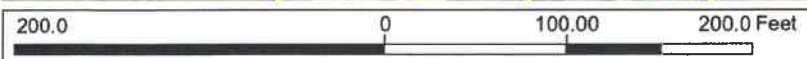


- ### Legend
- Customer Point
 - Manhole
 - Manhole Label
 - Lift Station
 - Lamp Hole
 - Cleanout
 - Lamphole
 - Lamp Hole Label
 - Grit Chamber
 - Pipe Point
 - Pipe Point Label
 - Gravity Main
 - Gravity Main Label
 - Pressurized Main Point
 - Air Release Valve
 - ◆ GPS Location
 - Trace Station
 - Valve
 - Pressurized Main
 - Lagoon
 - Road
 - ... County Roads / City Streets
 - US Highway
 - Lettered State Highway
 - Railroad
 - Address

Notes

This Cadastral Map is for informational purposes only. It does not purport to represent a property boundary survey of the parcels shown and shall not be used for conveyances or the establishment of property boundaries.

THIS MAP IS NOT TO BE USED FOR NAVIGATION



This Cadastral Map is for informational purposes only. It does not purport to represent a property boundary survey of the parcels shown and shall not be used for conveyances or the establishment of property boundaries.

THIS MAP IS NOT TO BE USED FOR NAVIGATION

Upstream Manhole: C3-046

Rim Elevation: 808.32 Ft

Integrity™ Sewer Analyst

Downstream Manhole: C3-030

Rim Elevation: 800.29 Ft

Sewer Report

Material: Block

Depth: 9.17 Ft

Slope (%): 1.75

Line Length: 402.35 Ft

Line Size: 8"

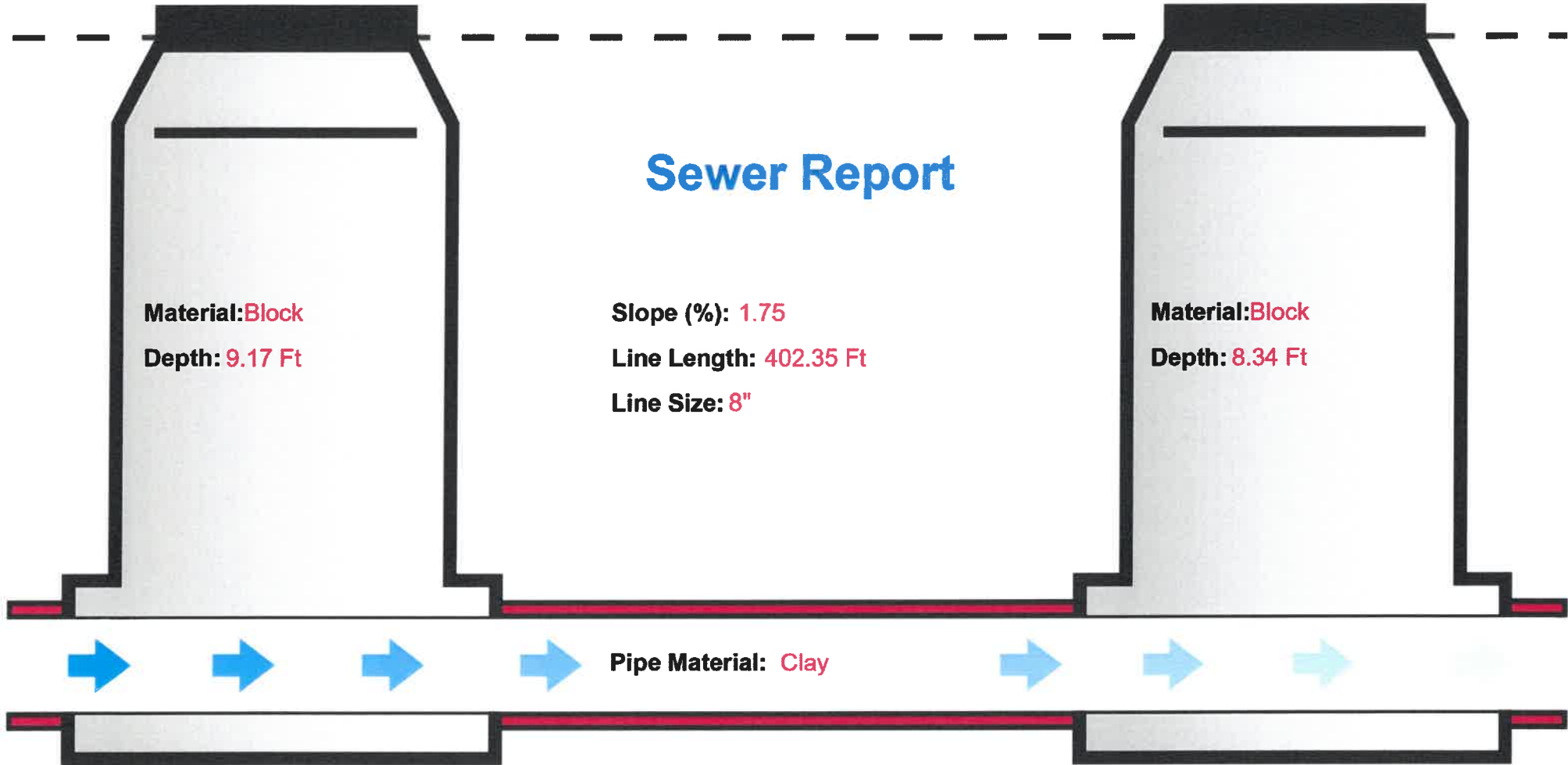
Material: Block

Depth: 8.34 Ft

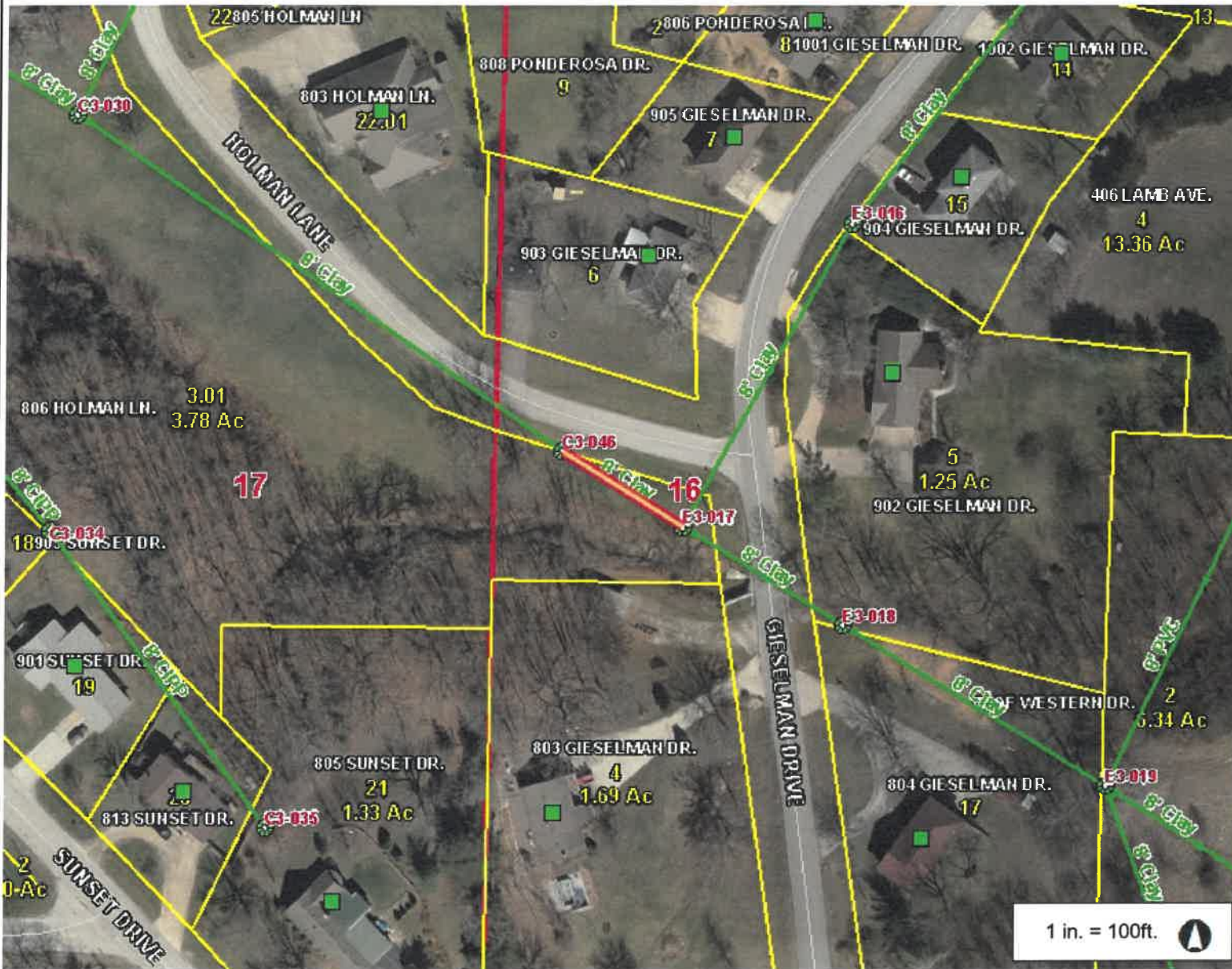
Pipe Material: Clay

Pipe Invert Elevation: 799.15 Ft

Pipe Invert Elevation: 792.12 Ft



Macon, MO



Legend

- Customer Point
- Manhole
- Manhole Label
- Lift Station
- Lamp Hole
- Cleanout
- Lamphole
- Lamp Hole Label
- Grit Chamber
- Pipe Point
- Pipe Point Label
- Gravity Main
- Gravity Main Label
- Pressurized Main Point
- Air Release Valve
- ◆ GPS Location
- Trace Station
- Valve
- Pressurized Main
- Lagoon
- Road
- County Roads / City Streets
- US Highway
- Lettered State Highway
- + Railroad
- Address

200.0 0 100.00 200.0 Feet

1 in. = 100ft.

This Cadastral Map is for informational purposes only. It does not purport to represent a property boundary survey of the parcels shown and shall not be used for conveyances or the establishment of property boundaries.

THIS MAP IS NOT TO BE USED FOR NAVIGATION

Notes

Upstream Manhole: E3-017

Rim Elevation: 805.18 Ft

Integrity™ Sewer Analyst

Downstream Manhole: C3-046

Rim Elevation: 808.32 Ft

Sewer Report

Material: Block

Depth: 5.03 Ft

Slope (%): 0.69

Line Length: 95.77 Ft

Line Size: 8"

Material: Block

Depth: 9.17 Ft

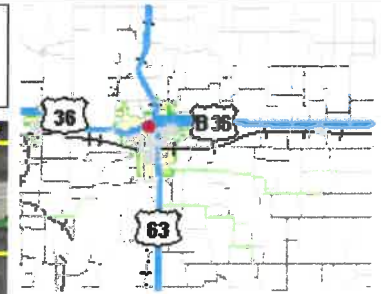
Pipe Material: Clay



Pipe Invert Elevation: 800.15 Ft

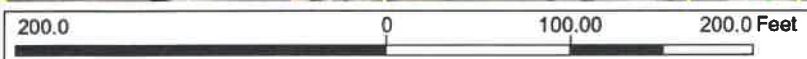
Pipe Invert Elevation: 799.49 Ft

Macon, MO



Legend

- Customer Point
- Manhole
- Manhole Label
- Lift Station
- Lamp Hole
- Cleanout
- Lamphole
- Lamp Hole Label
- Grit Chamber
- Pipe Point
- Pipe Point Label
- Gravity Main
- Gravity Main Label
- Pressurized Main Point
- Air Release Valve
- ◆ GPS Location
- Trace Station
- Valve
- Pressurized Main
- Lagoon
- Road
- County Roads / City Streets
- US Highway
- Lettered State Highway
- + Railroad
- Address



1 in. = 100ft.

This Cadastral Map is for informational purposes only. It does not purport to represent a property boundary survey of the parcels shown and shall not be used for conveyances or the establishment of property boundaries.

THIS MAP IS NOT TO BE USED FOR NAVIGATION

Notes

Upstream Manhole: E3-041

Rim Elevation: 863.15 Ft

Integrity™ Sewer Analyst

Downstream Manhole: E3-040

Rim Elevation: 855.29 Ft

Sewer Report

Material: Block

Depth: 6.51 Ft

Slope (%): 3.92

Line Length: 186.96 Ft

Line Size: 8"

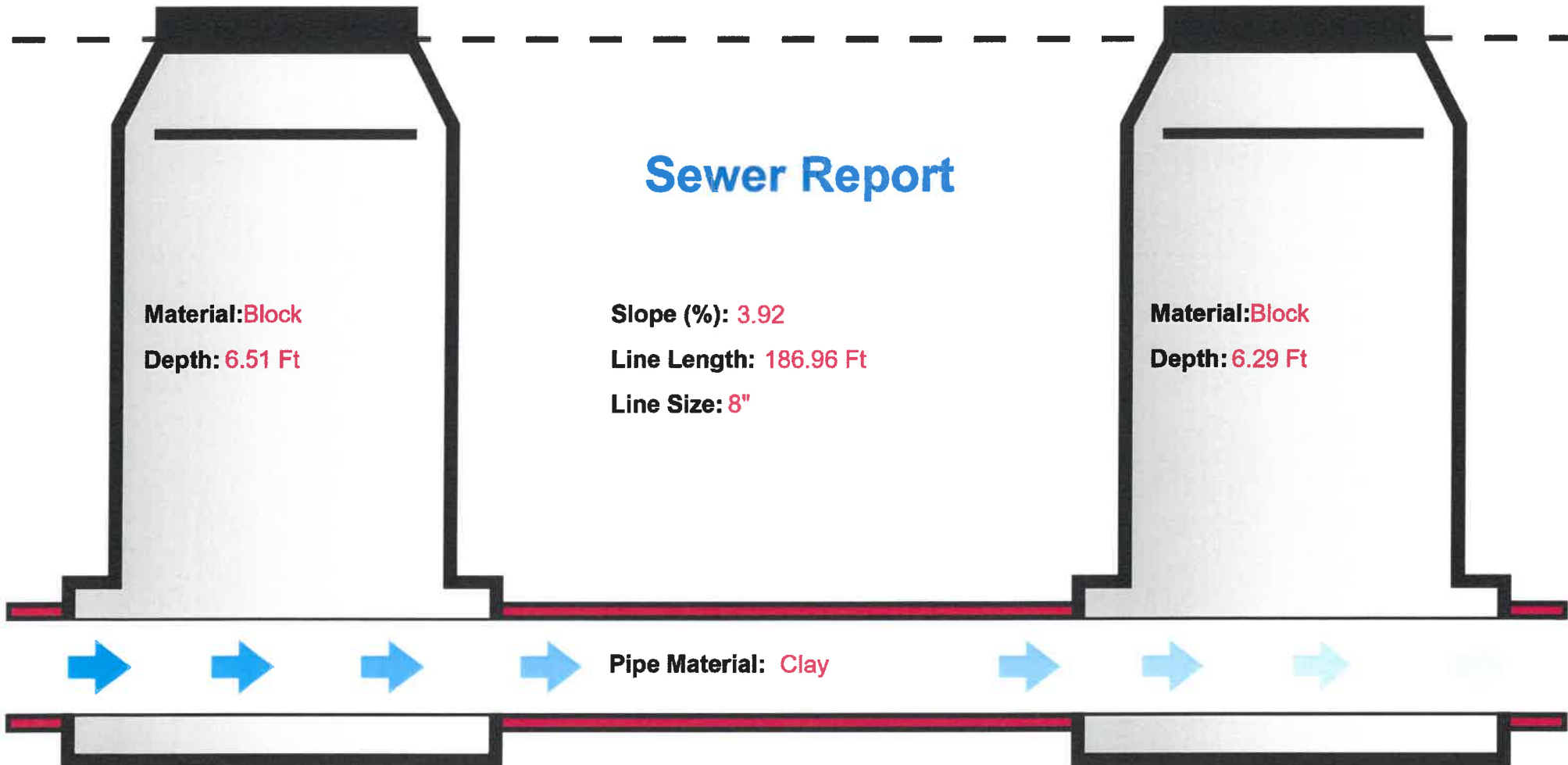
Material: Block

Depth: 6.29 Ft

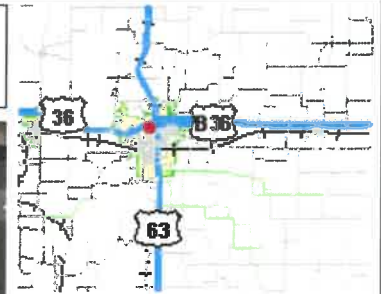
Pipe Material: Clay

Pipe Invert Elevation: 856.64 Ft

Pipe Invert Elevation: 849.31 Ft



Macon, MO

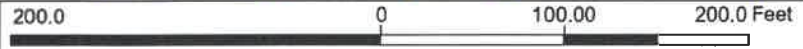


- ### Legend
- Customer Point
 - Manhole
 - Manhole Label
 - Lift Station
 - Lamp Hole
 - Cleanout
 - Lamphole
 - Lamp Hole Label
 - Grit Chamber
 - Pipe Point
 - Pipe Point Label
 - ▶ Gravity Main
 - Gravity Main Label
 - Pressurized Main Point
 - Air Release Valve
 - ◆ GPS Location
 - Trace Station
 - Valve
 - ▶ Pressurized Main
 - Lagoon
 - Road
 - County Roads / City Streets
 - US Highway
 - Lettered State Highway
 - Railroad
 - Address

Notes

This Cadastral Map is for informational purposes only. It does not purport to represent a property boundary survey of the parcels shown and shall not be used for conveyances or the establishment of property boundaries.

THIS MAP IS NOT TO BE USED FOR NAVIGATION



1 in. = 100ft.

Upstream Manhole: E3-042

Rim Elevation: 869.23 Ft

Integrity™ Sewer Analyst

Downstream Manhole: E3-041

Rim Elevation: 863.15 Ft

Sewer Report

Material: Block

Depth: 8.96 Ft

Slope (%): 1.09

Line Length: 299.00 Ft

Line Size: 8"

Material: Block

Depth: 6.51 Ft

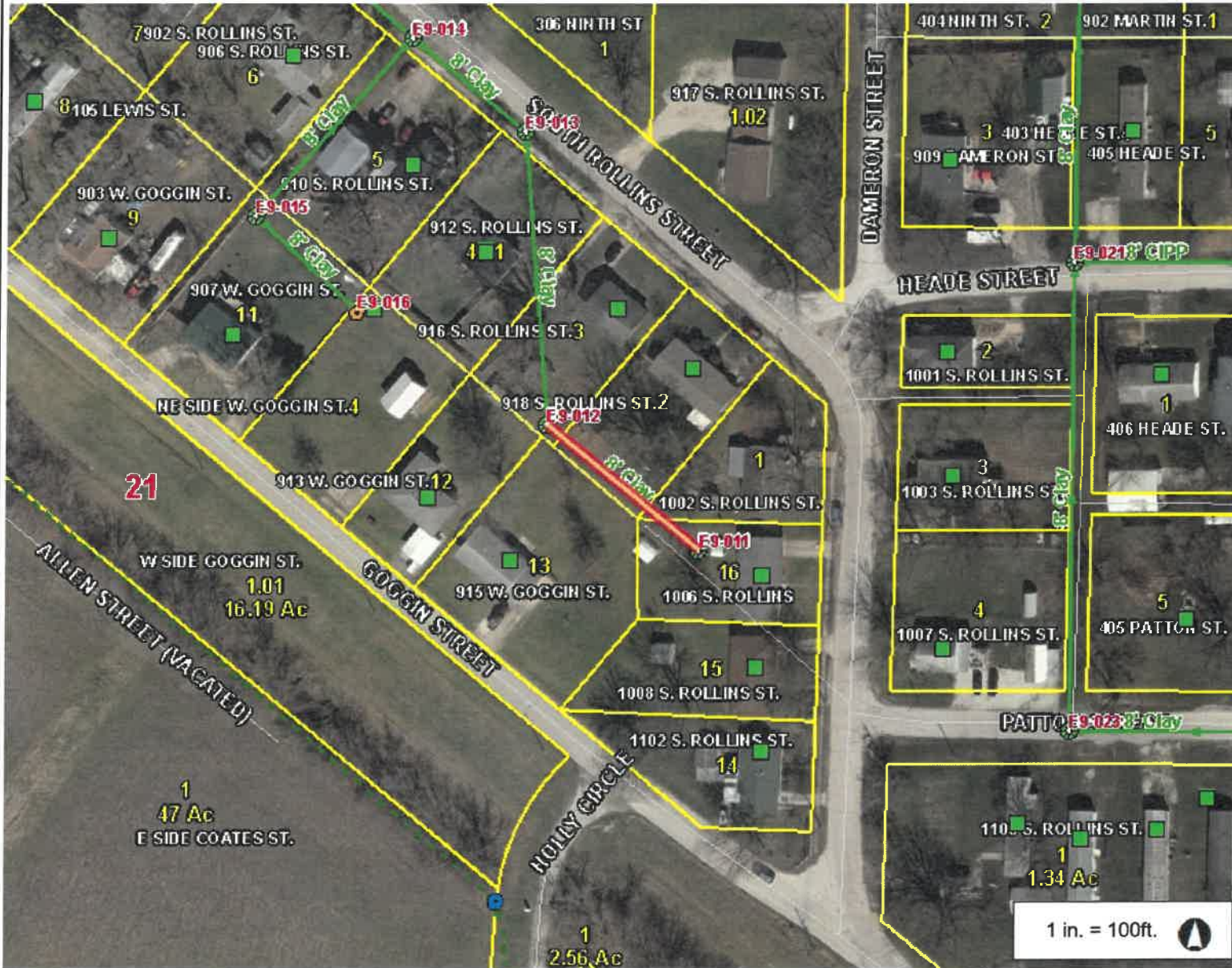
Pipe Material: Clay



Pipe Invert Elevation: 860.27 Ft

Pipe Invert Elevation: 857.02 Ft

Macon, MO

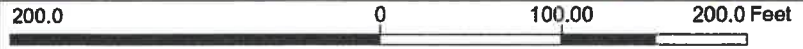


- ### Legend
- Customer Point
 - Manhole
 - Manhole Label
 - Lift Station
 - Lamp Hole
 - Cleanout
 - Lamphole
 - Lamp Hole Label
 - Grit Chamber
 - Pipe Point
 - Pipe Point Label
 - Gravity Main
 - Gravity Main Label
 - Pressurized Main Point
 - Air Release Valve
 - ◆ GPS Location
 - Trace Station
 - Valve
 - Pressurized Main
 - Lagoon
 - Road
 - County Roads / City Streets
 - US Highway
 - Lettered State Highway
 - Railroad
 - Address

Notes

This Cadastral Map is for informational purposes only. It does not purport to represent a property boundary survey of the parcels shown and shall not be used for conveyances or the establishment of property boundaries.

THIS MAP IS NOT TO BE USED FOR NAVIGATION



1 in. = 100ft.

Upstream Manhole: E9-011

Rim Elevation: 873.54 Ft

Integrity™ Sewer Analyst

Downstream Manhole: E9-012

Rim Elevation: 869.34 Ft

Sewer Report

Material: Brick

Depth: 7.52 Ft

Slope (%): 2.27

Line Length: 133.85 Ft

Line Size: 8"

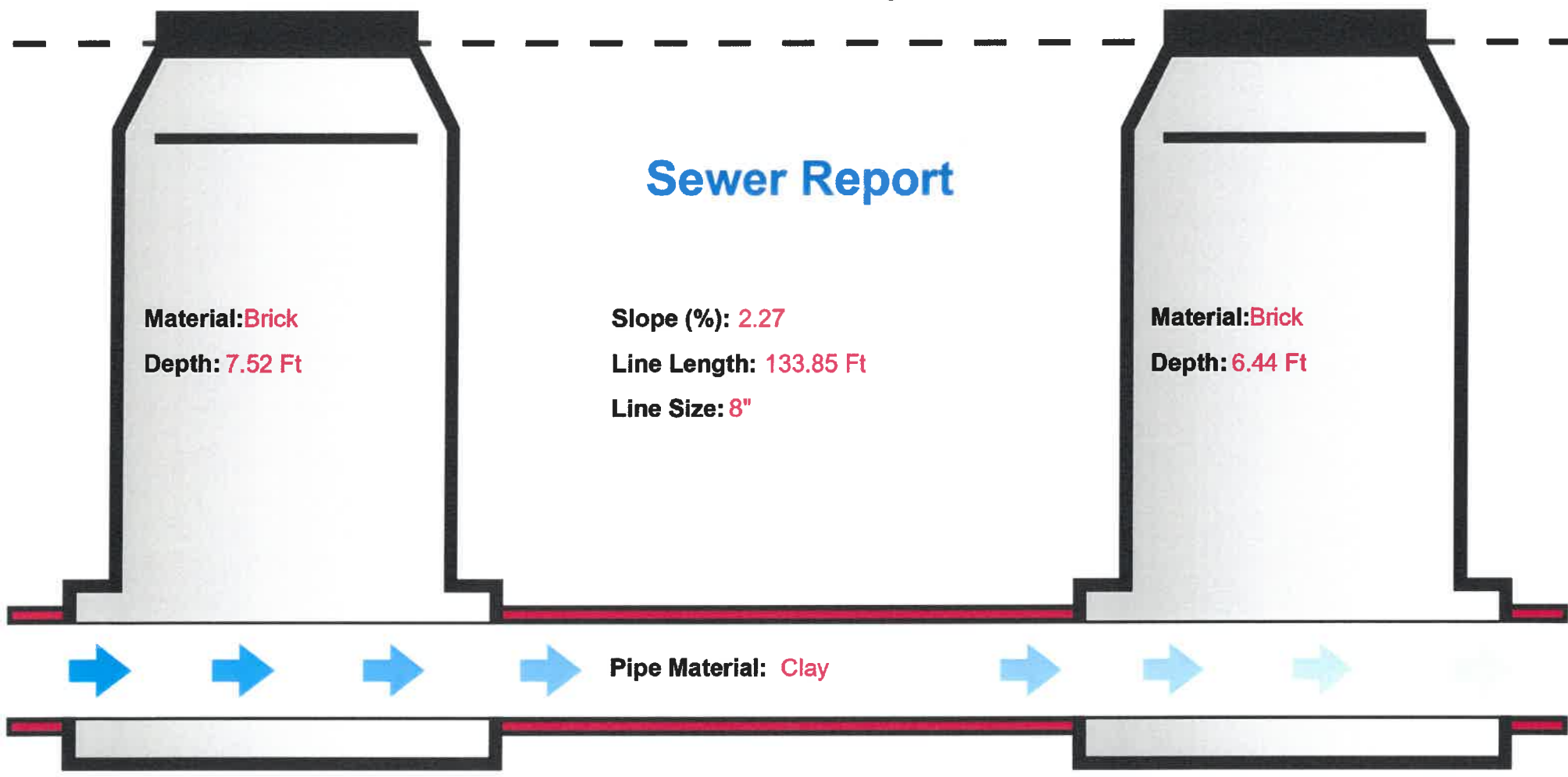
Material: Brick

Depth: 6.44 Ft

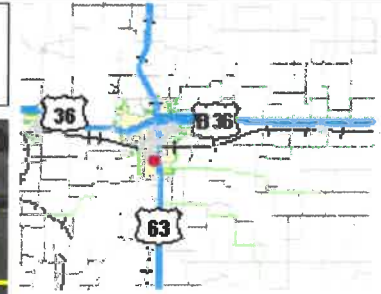
Pipe Material: Clay

Pipe Invert Elevation: 866.02 Ft

Pipe Invert Elevation: 862.99 Ft



Macon, MO

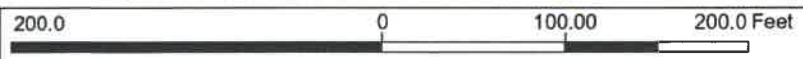


- ### Legend
- Customer Point
 - Manhole
 - Manhole Label
 - Lift Station
 - Lamp Hole
 - Cleanout
 - Lamphole
 - Lamp Hole Label
 - Grit Chamber
 - ⊙ Pipe Point
 - Pipe Point Label
 - Gravity Main
 - Gravity Main Label
 - Pressurized Main Point
 - Air Release Valve
 - ◆ GPS Location
 - Trace Station
 - Valve
 - Pressurized Main
 - Lagoon
 - Road
 - County Roads / City Streets
 - US Highway
 - Lettered State Highway
 - Railroad
 - Address

Notes

This Cadastral Map is for informational purposes only. It does not purport to represent a property boundary survey of the parcels shown and shall not be used for conveyances or the establishment of property boundaries.

THIS MAP IS NOT TO BE USED FOR NAVIGATION



1 in. = 100ft. ▲

Upstream Manhole: E9-015
Rim Elevation: 868.83 Ft

Integrity™ Sewer Analyst

Downstream Manhole: E9-014
Rim Elevation: 866.66 Ft

Sewer Report

Material: Block
Depth: 5.68 Ft

Slope (%): 1.77
Line Length: 160.75 Ft
Line Size: 8"

Material: Block
Depth: 6.40 Ft

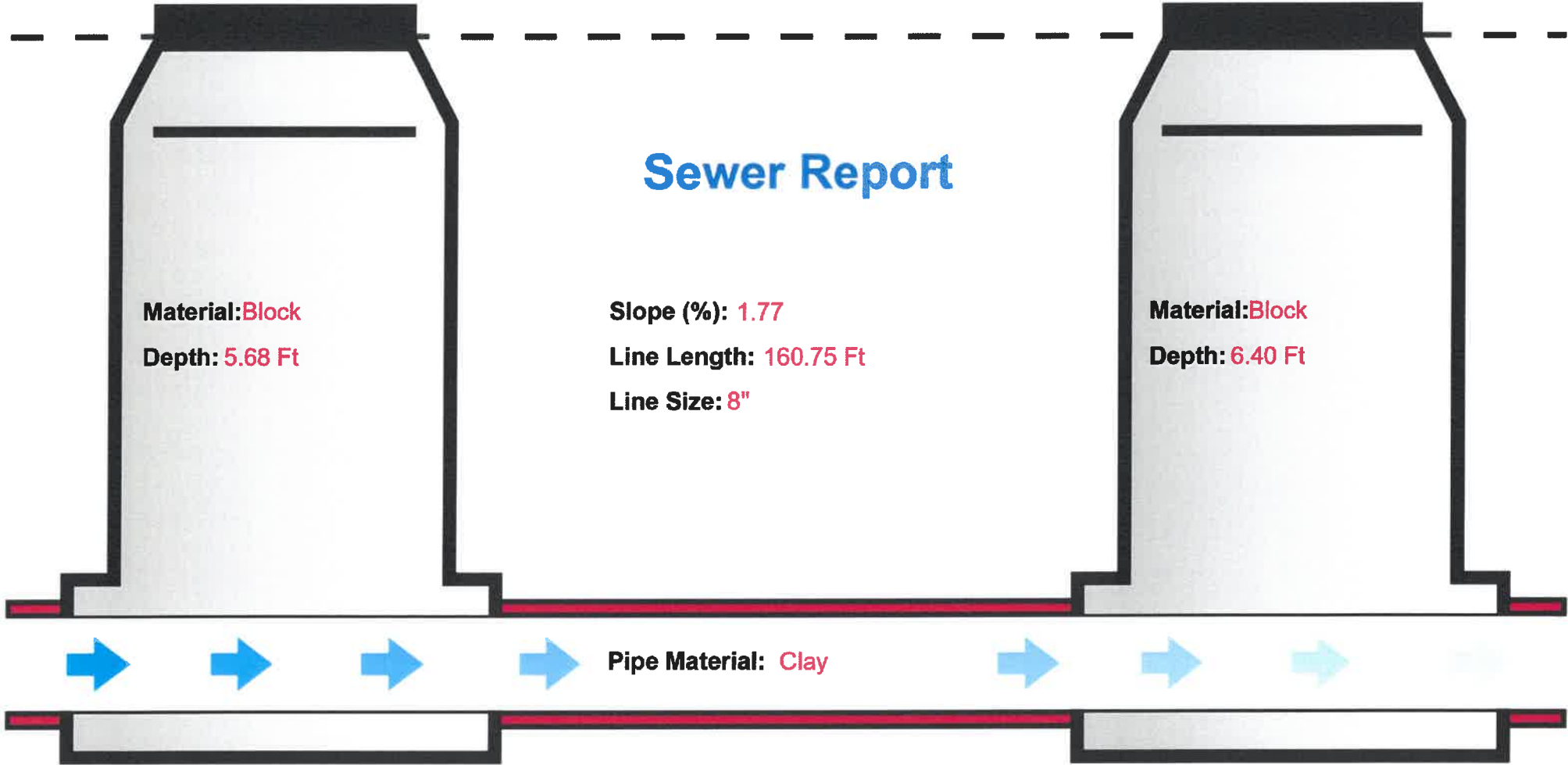


Pipe Material: Clay

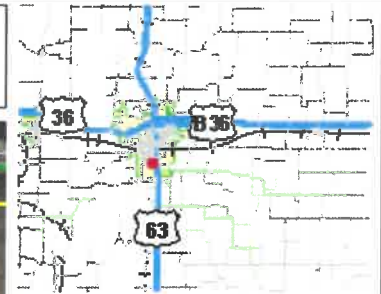


Pipe Invert Elevation: 863.15 Ft

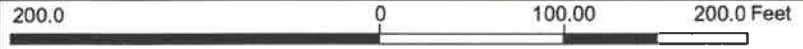
Pipe Invert Elevation: 860.30 Ft



Macon, MO



- ### Legend
- Customer Point
 - Manhole
 - Manhole Label
 - Lift Station
 - Lamp Hole
 - Cleanout
 - Lamphole
 - Lamp Hole Label
 - Grit Chamber
 - Pipe Point
 - Pipe Point Label
 - Gravity Main
 - Gravity Main Label
 - Pressurized Main Point
 - Air Release Valve
 - ◆ GPS Location
 - Trace Station
 - Valve
 - Pressurized Main
 - Lagoon
 - Road
 - County Roads / City Streets
 - US Highway
 - Lettered State Highway
 - Railroad
 - Address



1 in. = 100ft.

This Cadastral Map is for informational purposes only. It does not purport to represent a property boundary survey of the parcels shown and shall not be used for conveyances or the establishment of property boundaries.

THIS MAP IS NOT TO BE USED FOR NAVIGATION

Notes

Upstream Manhole: E9-012

Rim Elevation: 869.34 Ft

Integrity™ Sewer Analyst

Downstream Manhole: E9-013

Rim Elevation: 866.83 Ft

Sewer Report

Material: Brick

Depth: 6.44 Ft

Slope (%): 0.88

Line Length: 199.13 Ft

Line Size: 8"

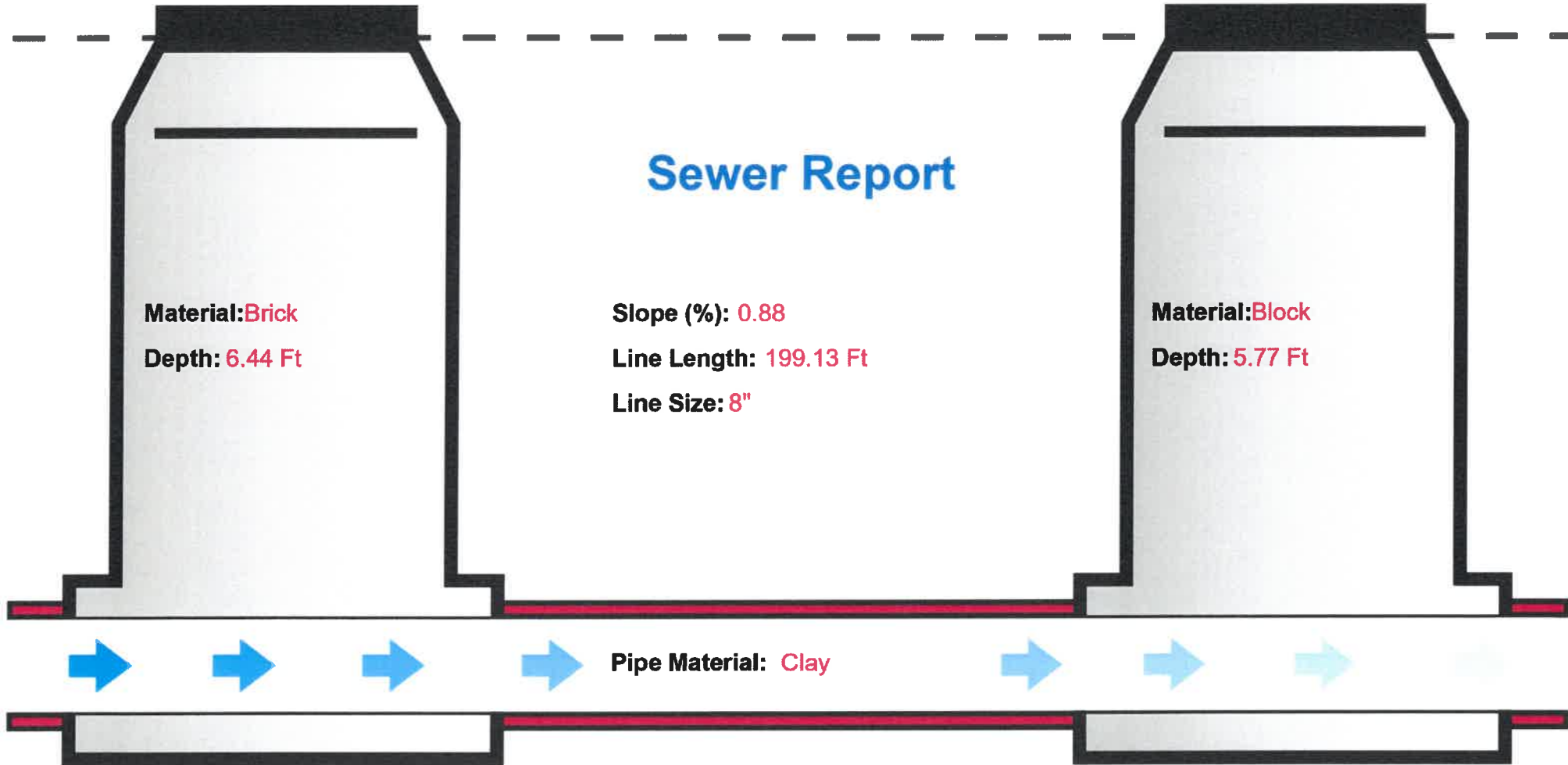
Material: Block

Depth: 5.77 Ft

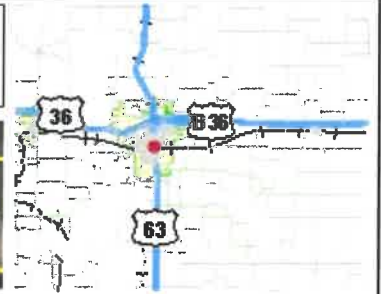
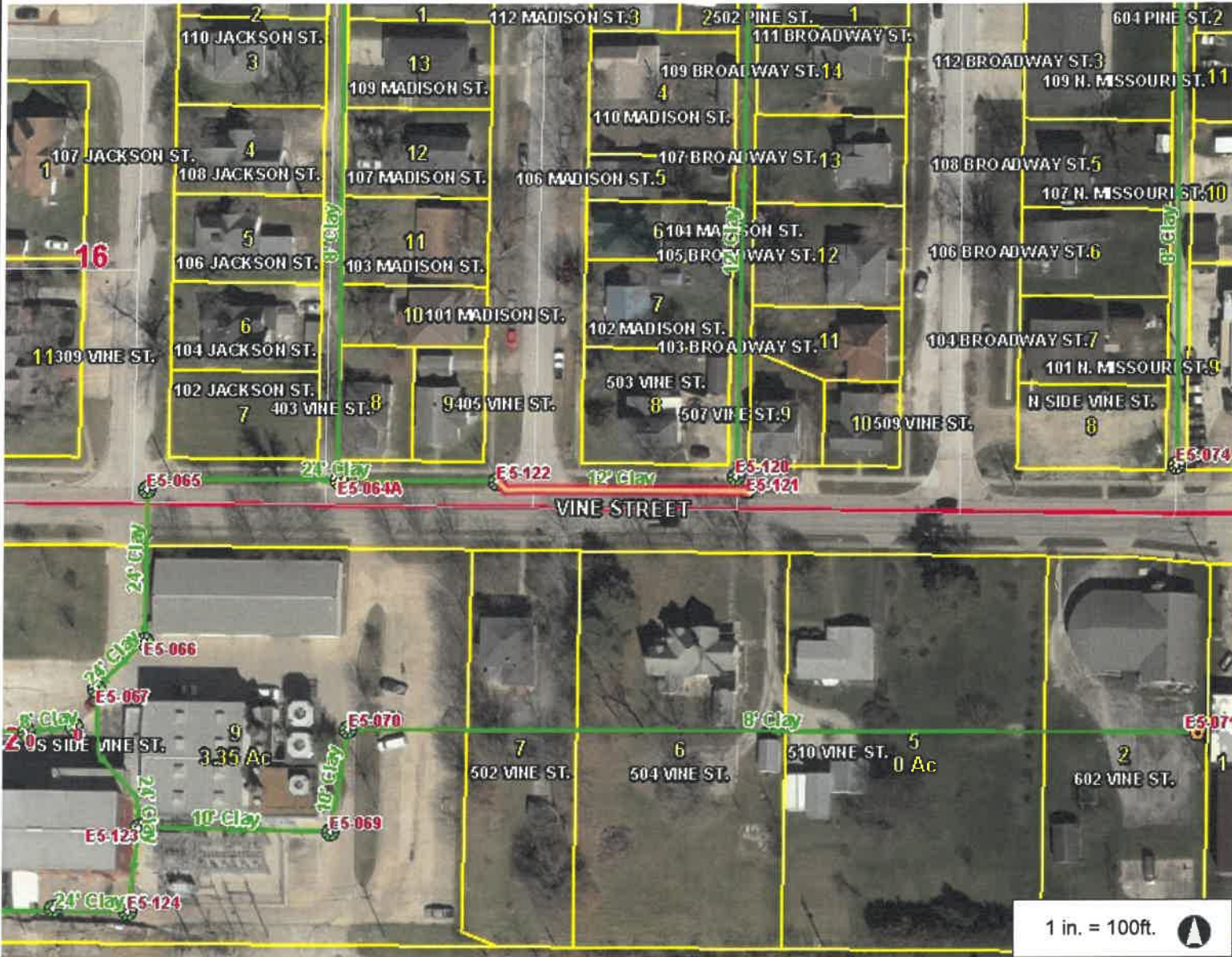
Pipe Material: Clay

Pipe Invert Elevation: 862.90 Ft

Pipe Invert Elevation: 861.15 Ft

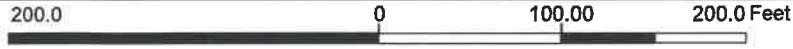


Macon, MO



- ### Legend
- Manhole
 - Manhole Label
 - Lift Station
 - Lamp Hole
 - Cleanout
 - Lamphole
 - Lamp Hole Label
 - Grit Chamber
 - Pipe Point
 - Pipe Point Label
 - Gravity Main
 - Gravity Main Label
 - Pressurized Main Point
 - Air Release Valve
 - ◆ GPS Location
 - Trace Station
 - Valve
 - Pressurized Main
 - Lagoon
 - Road
 - County Roads / City Streets
 - US Highway
 - Lettered State Highway
 - + Railroad
 - Address
 - Parcel

1 in. = 100ft.



This Cadastral Map is for informational purposes only. It does not purport to represent a property boundary survey of the parcels shown and shall not be used for conveyances or the establishment of property boundaries.

THIS MAP IS NOT TO BE USED FOR NAVIGATION

Notes

Upstream Manhole: E5-121

Rim Elevation:

Integrity™ Sewer Analyst

Downstream Manhole: E5-122

Rim Elevation:

Sewer Report

Material:

Depth:

Slope (%): 0.00

Line Length: 171.49 Ft

Line Size: 12"

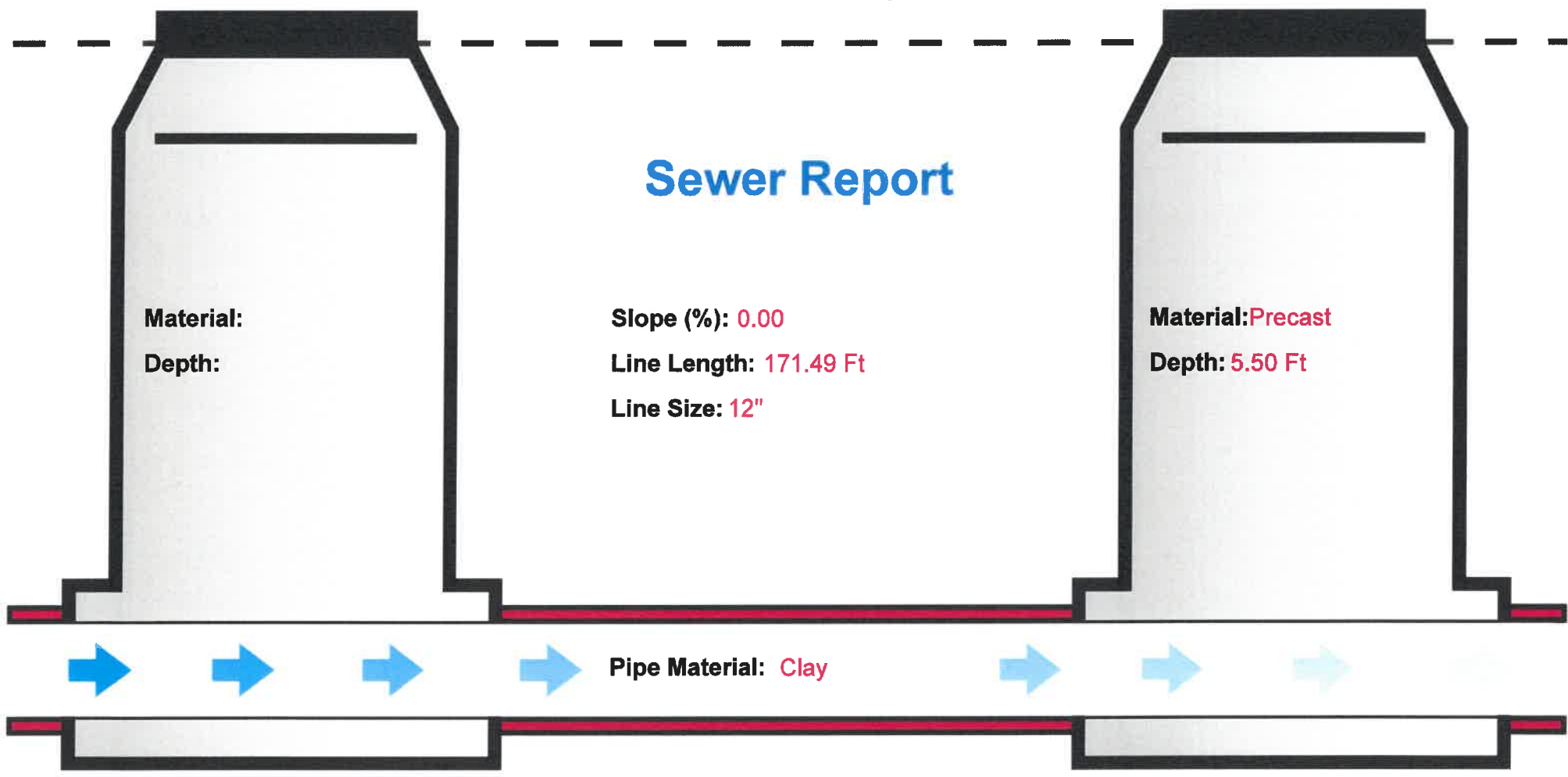
Material: Precast

Depth: 5.50 Ft

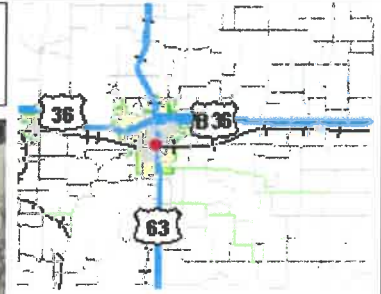
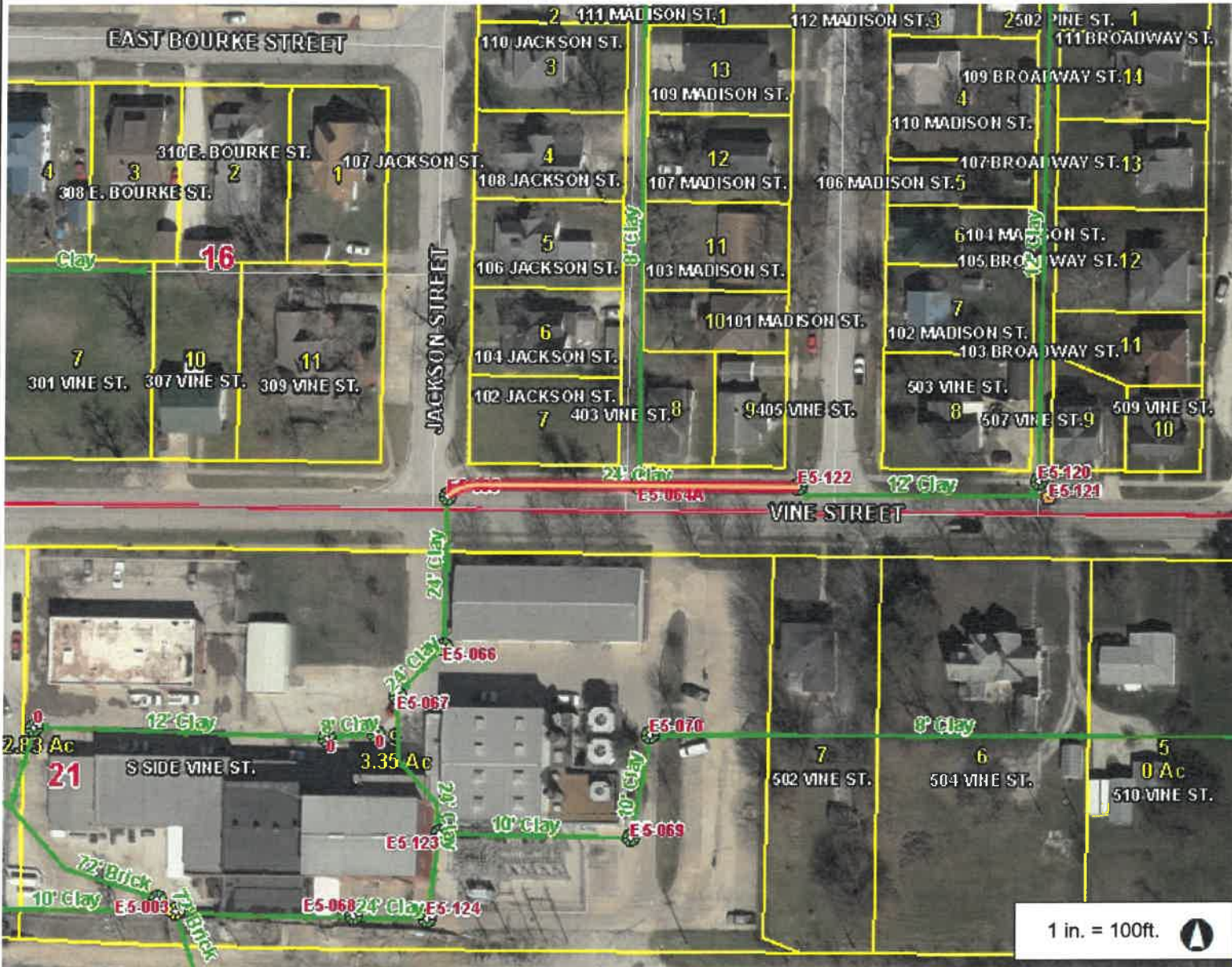
Pipe Material: Clay

Pipe Invert Elevation: 0.00 Ft

Pipe Invert Elevation: 0.00 Ft



Macon, MO

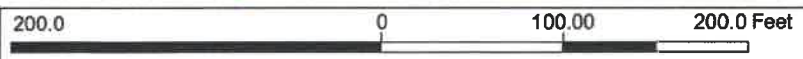


- ### Legend
- Manhole
 - Manhole Label
 - Lift Station
 - Lamp Hole
 - Cleanout
 - Lamphole
 - Lamp Hole Label
 - Grit Chamber
 - Pipe Point
 - Pipe Point Label
 - ▶ Gravity Main
 - ▶ Gravity Main Label
 - Pressurized Main Point
 - Air Release Valve
 - ◆ GPS Location
 - Trace Station
 - Valve
 - ▶ Pressurized Main
 - Lagoon
 - Road
 - County Roads / City Streets
 - US Highway
 - Lettered State Highway
 - + Railroad
 - Address
 - Parcel

Notes

This Cadastral Map is for informational purposes only. It does not purport to represent a property boundary survey of the parcels shown and shall not be used for conveyances or the establishment of property boundaries.

THIS MAP IS NOT TO BE USED FOR NAVIGATION



1 in. = 100ft.

Upstream Manhole: E5-122

Rim Elevation:

Integrity™ Sewer Analyst

Downstream Manhole: E5-065

Rim Elevation: 847.91 Ft

Sewer Report

Material: **Precast**

Depth: **5.50 Ft**

Slope (%): **0.00**

Line Length: **239.29 Ft**

Line Size: **24"**

Material: **Precast**

Depth: **10.92 Ft**



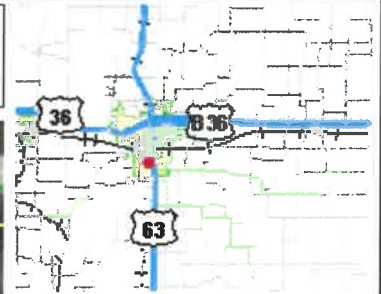
Pipe Material: **Clay**



Pipe Invert Elevation: **0.00 Ft**

Pipe Invert Elevation: **836.99 Ft**

Macon, MO

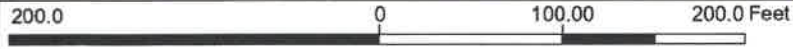


- ### Legend
- Customer Point
 - Manhole
 - Manhole Label
 - Lift Station
 - Lamp Hole
 - Cleanout
 - Lamphole
 - Lamp Hole Label
 - Grit Chamber
 - Pipe Point
 - Pipe Point Label
 - Gravity Main
 - Gravity Main Label
 - Pressurized Main Point
 - Air Release Valve
 - ◆ GPS Location
 - Trace Station
 - Valve
 - Pressurized Main
 - Lagoon
 - Road
 - County Roads / City Streets
 - US Highway
 - Lettered State Highway
 - Railroad
 - Address

Notes

This Cadastral Map is for informational purposes only. It does not purport to represent a property boundary survey of the parcels shown and shall not be used for conveyances or the establishment of property boundaries.

THIS MAP IS NOT TO BE USED FOR NAVIGATION



1 in. = 100ft. ▲

Upstream Manhole: E9-016

Rim Elevation:

Integrity™ Sewer Analyst

Downstream Manhole: E9-015

Rim Elevation: 868.83 Ft

Sewer Report

Material:

Depth:

Slope (%): 0.00

Line Length: 95.29 Ft

Line Size: 8"

Material:Block

Depth: 5.68 Ft

Pipe Material: Clay

Pipe Invert Elevation: 0.00 Ft

Pipe Invert Elevation: 863.61 Ft

